

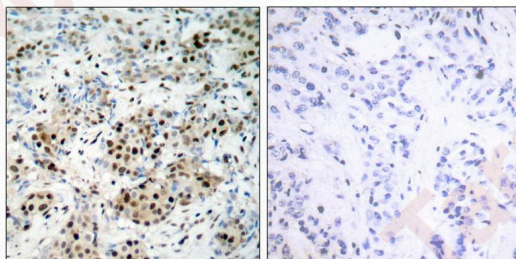
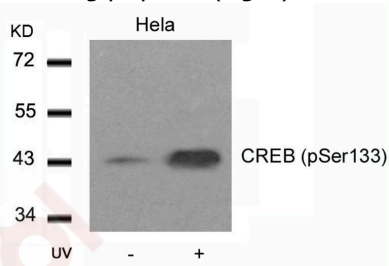
Anti-Phospho-CREB1 (Ser133) Polyclonal Antibody 2

Product Details

Ig Type:	IgG
Reactivity:	Human,Mouse,Rat
Conjugation:	Unconjugated
Purification:	Antibodies were produced by immunizing rabbits with synthetic phosphopeptide and KLH conjugates. Antibodies were purified by affinity-chromatography using epitope-specific phosphopeptide. Non-phospho specific antibodies were removed by chromatography using non-phosphopeptide.

Applications

- Verified Activity:
1. Western blot analysis of extracts from HeLa cells untreated or treated with UV using CREB (Phospho-Ser133) Antibody TMAC-00966.
 2. Immunohistochemical analysis of paraffin-embedded human breast carcinoma tissue using CREB (Phospho-Ser133) Antibody TMAC-00966 (left) or the same antibody preincubated with blocking peptide (right).



Application: IHC,WB

Properties

Stability & Storage: Store at 2°C-8°C for 1 month. Store at -20°C or -80°C for 12 months. Avoid repeated freeze-thaw cycles.

Shipping: Shipping with blue ice.

Antigen Details

Immunogen:	Peptide sequence around phosphorylation site of serine 133 (R-P-S(p)-Y-R) derived from Human CREB
Antigen Species:	human
Uniprot ID:	P16220
Synonyms:	p-CREB1 (Ser133);CREB1 (p-Ser133);p-CREB1 (S133);CREB1 (p-S133)

Research Background

CREB1 is a transcription factor that is a member of the bZIP family of DNA binding proteins. It binds as a homodimer to the CRE (cAMP-Responsive Element), an octameric palindrome containing a conserved core sequence, 5-prime-TGACG-3-prime. It consists of two transcript variants encoding respective isoforms produced by alternate splicing. It is mapped to 2q32.3-q34 . It is phosphorylated by several protein kinases and induces transcription of genes in response to hormonal stimulation of the cAMP pathway. CREB1 is crucial for the consolidation of long-term conditioned fear memories, but not for encoding, storage, or retrieval of these memories. It is required for the stability of reactivated or retrieved conditioned fear memories .

Inhibitor · Natural Compounds · Compound Libraries · Recombinant Proteins

This product is for Research Use Only · Not for Human or Veterinary or Therapeutic Use

Tel:781-999-4286 E_mail:info@targetmol.com Address:34 Washington Street,Wellesley Hills,MA 02481