

## Anti-CREB1 Antibody (9W878)

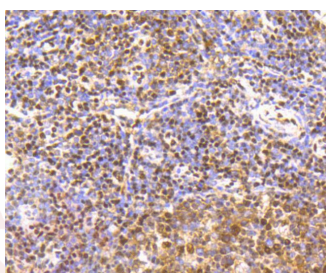
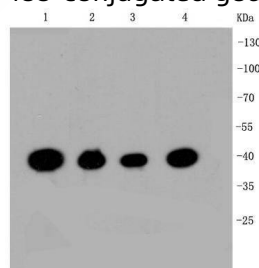
### Product Details

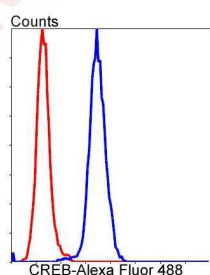
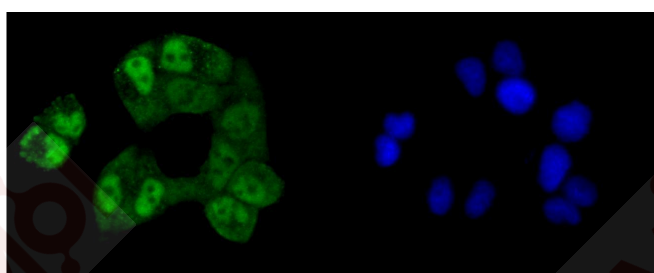
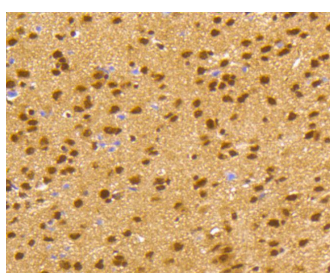
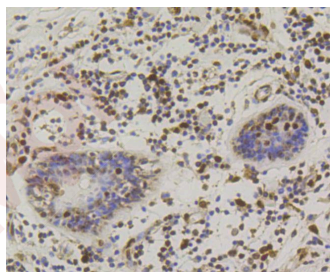
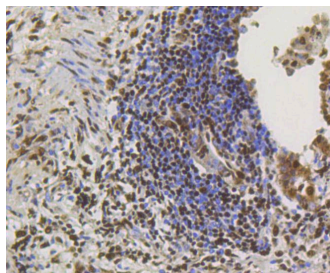
Ig Type:	IgG
Reactivity:	Human,Mouse,Rat,zebrafish
Conjugation:	Unconjugated
Molecular Weight:	Theoretical: 40 kDa.
Clone:	9W878
Purification:	ProA affinity purified

### Applications

#### Verified Activity:

1. Western blot analysis of CREB on different cell lysates using anti-CREB antibody at 1/1,000 dilution. Positive control: Lane 1: Hela, Lane 2: HepG2, Lane 3: Jurkat, Lane 4: NIH/3T3.
2. Immunohistochemical analysis of paraffin-embedded human tonsil tissue using anti-CREB antibody. Counter stained with hematoxylin.
3. Immunohistochemical analysis of paraffin-embedded human lung cancer tissue using anti-CREB antibody. Counter stained with hematoxylin.
4. Immunohistochemical analysis of paraffin-embedded human breast carcinoma tissue using anti-CREB antibody. Counter stained with hematoxylin.
5. Immunohistochemical analysis of paraffin-embedded mouse brain tissue using anti-CREB antibody. Counter stained with hematoxylin.
6. ICC staining CREB in Hela cells (green). The nuclear counter stain is DAPI (blue). Cells were fixed in paraformaldehyde, permeabilised with 0.25% Triton X100/PBS.
7. Flow cytometric analysis of Hela cells with CREB antibody at 1/50 dilution (blue) compared with an unlabelled control (cells without incubation with primary antibody; red). Alexa Fluor 488-conjugated goat anti rabbit IgG was used as the secondary antibody.





Application: FCM, ICC/IF, IHC, IP, WB

Recommended WB: 1:1000-5000; IHC: 1:50-200; ICC/IF: 1:50-200; FCM: 1:10-100

### Properties

Stability & Storage: Store at -20°C or -80°C for 12 months. Avoid repeated freeze-thaw cycles.

Shipping: Shipping with blue ice.

### Antigen Details

Immunogen:	Recombinant Protein
Uniprot ID:	P16220
Synonyms:	CREB1;CREB-1;cAMP-responsive element-binding protein 1;Cyclic AMP-responsive element-binding protein 1

---

### Research Background

Eukaryotic gene transcription is regulated by sequence-specific transcription factors that bind modular cis-acting promoter and enhancer elements. The ATF/CREB transcription factor family binds the palindromic cAMP response element (CRE) octanucleotide TGACGTCA. The ATF/CREB family includes CREB-1, CREB-2 (also designated ATF-4), ATF-1, ATF-2 and ATF-3. This family of proteins contains highly divergent N-terminal domains, but shares a C-terminal leucine zipper for dimerization and DNA binding. Although CREB can bind to DNA in an unphosphorylated state, it cannot activate transcription. Phosphorylation of CREB on Ser 133 by protein kinase A facilitates its interaction with the CREB-binding protein (CBP) and activates the basal transcription complex. CREB functions in neoglucogenesis through interactions with the nuclear coactivator PGC-1. CREB may play a role in the pathogenesis of type II diabetes and dilated cardiomyopathy.

**Inhibitor · Natural Compounds · Compound Libraries · Recombinant Proteins**

This product is for Research Use Only · Not for Human or Veterinary or Therapeutic Use

Tel:781-999-4286 E\_mail:info@targetmol.com Address:34 Washington Street,Wellesley Hills,MA 02481