

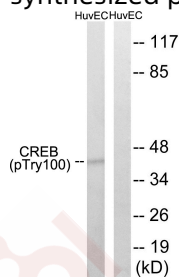
## Anti-Phospho-CREB1 (Thr100) Polyclonal Antibody 2

### Product Details

Ig Type:	IgG
Reactivity:	Human,Mouse,Rat
Conjugation:	Unconjugated
Molecular Weight:	Actual: 43 kDa.
Purification:	Antibodies were produced by immunizing rabbits with synthetic phosphopeptide and KLH conjugates. Antibodies were purified by affinity-chromatography using epitope-specific phosphopeptide. Non-phospho specific antibodies were removed by chromatography using non-phosphopeptide.

### Applications

**Verified Activity:** 1. Western blot analysis of extracts from HUVEC cells, treated with etoposide (25uM, 24hours), using CREB (Phospho-Thr100) antibody TMAC-00963. The lane on the right is treated with the synthesized peptide.



Application:	WB
Recommended	WB: 1:500-3000

### Properties

Stability & Storage:	Store at -20°C or -80°C for 12 months. Avoid repeated freeze-thaw cycles.
Shipping:	Shipping with blue ice.

### Antigen Details

Immunogen:	Peptide sequence around phosphorylation site of threonine 100 (S-G-T(p)-Q-I) derived from Human CREB
Antigen Species:	human
Uniprot ID:	P16220
Synonyms:	CREB1 (p-T100);CREB1 (p-Thr100);p-CREB1 (Thr100);p-CREB1 (T100)

### Research Background

Phosphorylation-dependent transcription factor that stimulates transcription upon binding to the DNA cAMP response element (CRE), a sequence present in many viral and cellular promoters. Transcription activation is enhanced by the TORC coactivators which act independently of Ser-133 phosphorylation. Involved in different cellular processes including the synchronization of circadian rhythmicity and the differentiation of adipose cells.

**Inhibitor · Natural Compounds · Compound Libraries · Recombinant Proteins**

This product is for Research Use Only · Not for Human or Veterinary or Therapeutic Use

Tel:781-999-4286 E\_mail:info@targetmol.com Address:34 Washington Street,Wellesley Hills,MA 02481