

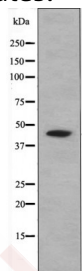
Anti-Phospho-CREB1 (Ser111) Polyclonal Antibody

Product Details

Ig Type:	IgG
Reactivity:	Human,Mouse,Rat
Conjugation:	Unconjugated
Molecular Weight:	Theoretical: 43 kDa.
Purification:	Antibodies were produced by immunizing rabbits with synthetic phosphopeptide and KLH conjugates. Antibodies were purified by affinity-chromatography using epitope-specific phosphopeptide. Non-phospho specific antibodies were removed by chromatography using non-phosphopeptide.

Applications

Verified Activity: 1. Western blot analysis CREB (Phospho-Ser111) using Starvation treated K562 whole cell lysates.



Application: WB
Recommended WB: 1:1000

Properties

Stability & Storage: Store at -20°C or -80°C for 12 months. Avoid repeated freeze-thaw cycles.
Shipping: Shipping with blue ice.

Antigen Details

Immunogen: A synthesized phosphopeptide: human CREB around the phosphorylation site of Ser111
Antigen Species: human
Uniprot ID: P16220
Synonyms: CREB1 (p-Ser111);p-CREB1 (Ser111);p-CREB1 (S111);CREB1 (p-S111)

Inhibitor · Natural Compounds · Compound Libraries · Recombinant Proteins

This product is for Research Use Only. Not for Human or Veterinary or Therapeutic Use

Tel:781-999-4286 E_mail:info@targetmol.com Address:34 Washington Street,Wellesley Hills,MA 02481