

Anti-CPT2 Antibody (3I417)

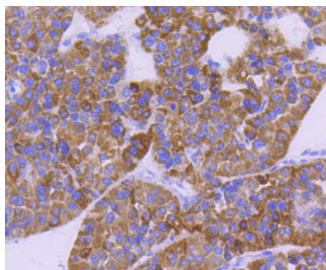
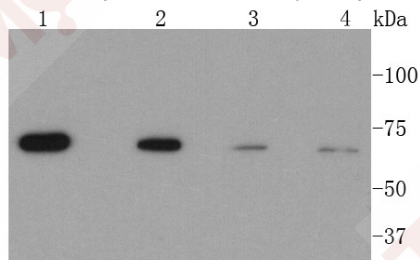
Product Details

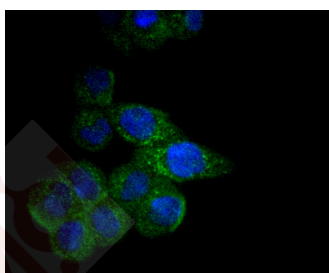
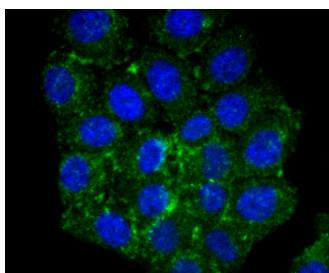
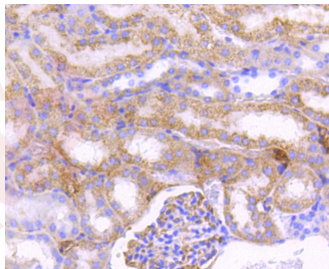
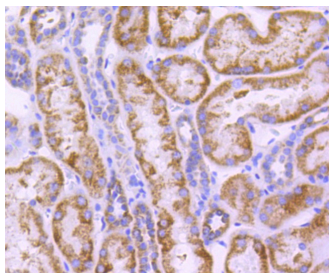
Ig Type:	IgG
Reactivity:	Human,Mouse,Rat
Conjugation:	Unconjugated
Molecular Weight:	Theoretical: 74 kDa.
Clone:	3I417
Purification:	ProA affinity purified

Applications

Verified Activity:

1. Western blot analysis of CPT2 on different lysates using anti-CPT2 antibody at 1/1,000 dilution. Positive control: Lane 1: HeLa, Lane 2: 293, Lane 3: HepG2, Lane 4: NIH/3T3.
2. Immunohistochemical analysis of paraffin-embedded human liver cancer tissue using anti-CPT2 antibody. Counter stained with hematoxylin.
3. Immunohistochemical analysis of paraffin-embedded human kidney tissue using anti-CPT2 antibody. Counter stained with hematoxylin.
4. Immunohistochemical analysis of paraffin-embedded mouse kidney tissue using anti-CPT2 antibody. Counter stained with hematoxylin.
5. ICC staining CPT2 in HepG2 cells (green). The nuclear counter stain is DAPI (blue). Cells were fixed in paraformaldehyde, permeabilised with 0.25% Triton X100/PBS.
6. ICC staining CPT2 in SW480 cells (green). The nuclear counter stain is DAPI (blue). Cells were fixed in paraformaldehyde, permeabilised with 0.25% Triton X100/PBS.





Application: ICC/IF,IHC,WB
Recommended WB: 1:500-1000; IHC: 1:50-200; ICC/IF: 1:50-200

Properties

Stability & Storage: Store at -20°C or -80°C for 12 months. Avoid repeated freeze-thaw cycles.

Shipping: Shipping with blue ice.

Antigen Details

Immunogen: Recombinant Protein
Uniprot ID: P23786
Synonyms: Carnitine palmitoyltransferase II (CPT II);mitochondrial;CPT1;CPT2;Carnitine O-palmitoyltransferase 2, mitochondrial

Research Background

The mitochondrial β -oxidation of long-chain fatty acids is initiated by the sequential action of carnitine palmitoyltransferase (CPT) I (outer membrane and detergent labile) and II (inner membrane and detergent stable), together with carnitine carrier. CPTI catalyzes the first reaction in the transport of long-chain fatty acids from the cytoplasm to the mitochondrion, a rate-limiting step in beta-oxidation. Two types of CPTI are known, the liver (CPTIA)

A DRUG SCREENING EXPERT

and muscle (CPTIB) isoforms. The muscle type protein is specially expressed in heart and skeletal muscle. Membrane-bound CPTI, but not CPTII, is inhibited reversibly by malonyl-coenzyme A (CoA). Unlike CPTII, CPTI requires membrane integrity for catalytic function. In addition, glutamic acid 3 and histidine 5 are necessary for malonyl CoA inhibition and binding to liver CPTI, but not for catalytic activity.

Inhibitor · Natural Compounds · Compound Libraries · Recombinant Proteins

This product is for Research Use Only · Not for Human or Veterinary or Therapeutic Use

Tel:781-999-4286 E_mail:info@targetmol.com Address:34 Washington Street,Wellesley Hills,MA 02481