

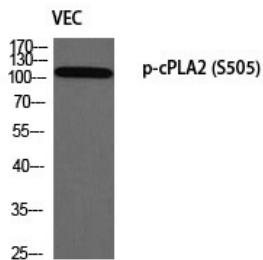
## Anti-Phospho-PLA2G2A (Ser505) Polyclonal Antibody

### Product Details

Ig Type:	IgG
Reactivity:	Human,Mouse,Rat
Conjugation:	Unconjugated
Molecular Weight:	Actual: 110 kDa.
Purification:	The antibody was affinity-purified from rabbit antiserum by affinity-chromatography using epitope-specific immunogen.

### Applications

Verified Activity: 1. Western blot analysis of VEC using p-cPLA2 (S505) antibody.



Application:	ELISA,IF,IHC,WB
Recommended	WB: 1:500-2000; IHC: 1:100-300; IF: 1:200-1000; ELISA: 1:10000

### Properties

Stability & Storage:	Store at -20°C or -80°C for 12 months. Avoid repeated freeze-thaw cycles.
Shipping:	Shipping with blue ice.

### Antigen Details

Immunogen:	A synthesized phosphopeptide: human cPLA2 around the phosphorylation site of S505
Antigen Species:	human
Uniprot ID:	P47712
Synonyms:	PLA2G2A (p-S505);p-PLA2G2A (S505);p-PLA2G2A (Ser505);PLA2G2A (p-Ser505)

**Inhibitor · Natural Compounds · Compound Libraries · Recombinant Proteins**

This product is for Research Use Only. Not for Human or Veterinary or Therapeutic Use

Tel:781-999-4286 E\_mail:info@targetmol.com Address:34 Washington Street,Wellesley Hills,MA 02481