

Anti-Phospho-GJA1 (Ser368) Polyclonal Antibody

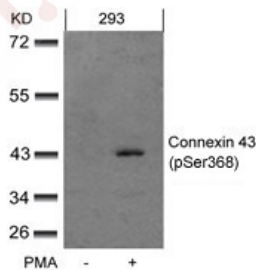
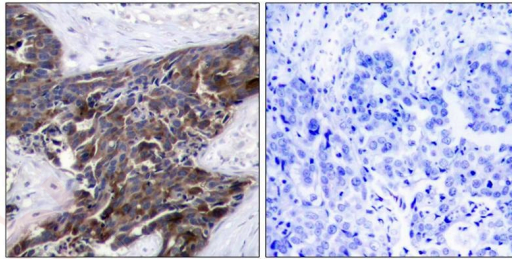
Product Details

Ig Type:	IgG
Reactivity:	Human,Mouse,Rat
Conjugation:	Unconjugated
Purification:	Antibodies were produced by immunizing rabbits with synthetic phosphopeptide and KLH conjugates. Antibodies were purified by affinity-chromatography using epitope-specific phosphopeptide. Non-phospho specific antibodies were removed by chromatography using non-phosphopeptide.

Applications

Verified Activity:

1. Immunohistochemical analysis of paraffin-embedded human breast carcinoma tissue using Connexin 43 (Phospho-Ser368) Antibody TMAC-00935 (left) or the same antibody preincubated with blocking peptide (right).
2. Western blot analysis of extracts from 293 cells untreated or treated with PMA using Connexin 43 (phospho-Ser368) Antibody TMAC-00935.



Application: IHC,WB

Properties

Stability & Storage:	Store at 2°C-8°C for 1 month. Store at -20°C or -80°C for 12 months. Avoid repeated freeze-thaw cycles.
Shipping:	Shipping with blue ice.

Antigen Details

Immunogen: Peptide sequence around phosphorylation site of serine 368 (R-A-S(p)-S-R) derived from Human Connexin 43

Antigen Species: human

Uniprot ID: P17302

Synonyms: GJA1 (p-Ser368);GJA1 (p-S368);p-GJA1 (S368);p-GJA1 (Ser368)

Research Background

One gap junction consists of a cluster of closely packed pairs of transmembrane channels, the connexons, through which materials of low MW diffuse from one cell to a neighboring cell. May play a critical role in the physiology of hearing by participating in the recycling of potassium to the cochlear endolymph.

Inhibitor · Natural Compounds · Compound Libraries · Recombinant Proteins

This product is for Research Use Only · Not for Human or Veterinary or Therapeutic Use

Tel:781-999-4286 E_mail:info@targetmol.com Address:34 Washington Street,Wellesley Hills,MA 02481