

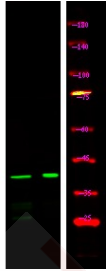
## Anti-Phospho-GJA1 (Ser282) Polyclonal Antibody

### Product Details

Ig Type:	IgG
Reactivity:	Human,Mouse,Rat
Conjugation:	Unconjugated
Molecular Weight:	Theoretical: 43 kDa.
Purification:	Antibodies were produced by immunizing rabbits with synthetic phosphopeptide and KLH conjugates. Antibodies were purified by affinity-chromatography using epitope-specific phosphopeptide. Non-phospho specific antibodies were removed by chromatography using non-phosphopeptide.

### Applications

Verified Activity: 1. Western Blot analysis of lysates of HEK-293 cell (Left) and HEK-293 cell treated with 100ng/mL LPS for 30min (Right), using primary antibody at 1:1000 dilution.



Application:	WB
Recommended	WB: 1:1000

### Properties

Stability & Storage:	Store at -20°C or -80°C for 12 months. Avoid repeated freeze-thaw cycles.
Shipping:	Shipping with blue ice.

### Antigen Details

Immunogen:	A synthesized phosphopeptide: human Connexin 43 around the phosphorylation site of Ser282
Antigen Species:	human
Uniprot ID:	P17302
Synonyms:	GJA1 (p-Ser282);GJA1 (p-S282);p-GJA1 (Ser282);p-GJA1 (S282)

**Inhibitor · Natural Compounds · Compound Libraries · Recombinant Proteins**

This product is for Research Use Only. Not for Human or Veterinary or Therapeutic Use

Tel:781-999-4286 E\_mail:info@targetmol.com Address:34 Washington Street,Wellesley Hills,MA 02481