

Anti-COMT Antibody (7B935)

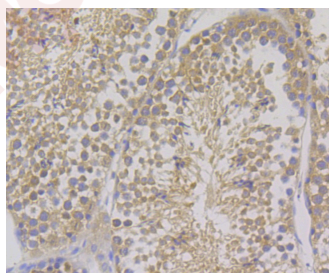
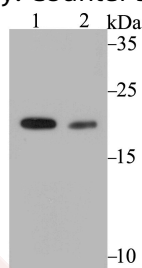
Product Details

Ig Type:	IgG
Reactivity:	Human,Mouse,Rat
Conjugation:	Unconjugated
Molecular Weight:	Theoretical: 24 kDa.
Clone:	7B935
Purification:	ProA affinity purified

Applications

Verified Activity:

1. Western blot analysis of COMT on MCF-7 cell (1) and rat testis tissue (2) lysate using anti-COMT antibody at 1/2,000 dilution.
2. Immunohistochemical analysis of paraffin-embedded mouse testis tissue using anti-COMT antibody. Counter stained with hematoxylin.



Application:	IHC,WB
Recommended	WB: 1:500-2000; IHC: 1:50-100

Properties

Stability & Storage:	Store at -20°C or -80°C for 12 months. Avoid repeated freeze-thaw cycles.
Shipping:	Shipping with blue ice.

Antigen Details

Immunogen: Recombinant Protein: C-terminal human COMT
Antigen Species: human
Uniprot ID: P21964
Synonyms: catechol-O-methyltransferase;HEL-S-98n

Research Background

Catechol-O-methyltransferase (COMT) plays a crucial role in the regulation of central dopaminergic systems by catalyzing the inactivation of catechol-amines. It is widely distributed in most tissues in soluble and membrane-bound forms. COMT-mediated methylation metabolism of catecholamine neurotransmitters is a first-line detoxification pathway. A Val158Met polymorphism of the COMT gene affects activity of the enzyme and influences performance and efficiency of the prefrontal cortex of the brain. Sequential conversion of estradiol to methoxyestradiol by COMT, contributes to the antimitogenic effects of estradiol on vascular smooth muscle cell growth via estrogen receptor-independent mechanisms.

Inhibitor · Natural Compounds · Compound Libraries · Recombinant Proteins

This product is for Research Use Only · Not for Human or Veterinary or Therapeutic Use

Tel:781-999-4286 E_mail:info@targetmol.com Address:34 Washington Street,Wellesley Hills,MA 02481