

Anti-COL17A1 Antibody (5Q412)

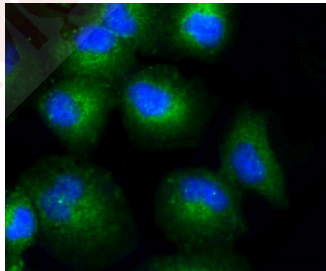
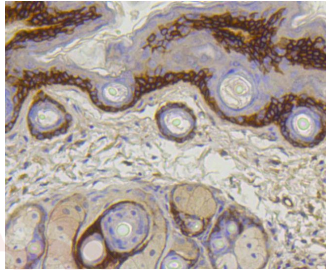
Product Details

Ig Type:	IgG
Reactivity:	Human,Mouse,Rat
Conjugation:	Unconjugated
Molecular Weight:	Theoretical: 130/180 kDa.
Clone:	5Q412
Purification:	ProA affinity purified

Applications

Verified Activity:

1. Immunohistochemical analysis of paraffin-embedded mouse skin tissue using anti-Collagen XVII antibody. Counter stained with hematoxylin.
2. ICC staining Collagen XVII in HUVEC cells (green). The nuclear counter stain is DAPI (blue). Cells were fixed in paraformaldehyde, permeabilised with 0.25% Triton X100/PBS.



Application:	ICC/IF,IHC,IP,WB
Recommended	WB: 1:1000-2000; IHC: 1:50-200; ICC/IF: 1:50-200

Properties

Stability & Storage:	Store at -20°C or -80°C for 12 months. Avoid repeated freeze-thaw cycles.
Shipping:	Shipping with blue ice.

Antigen Details

Immunogen:	Recombinant Protein
Uniprot ID:	Q9UMD9
Synonyms:	BPAG2;180 kDa bullous pemphigoid antigen 2;COL17A1;Collagen alpha-1(XVII) chain;Bullous pemphigoid antigen 2;BP180

Research Background

The extensive collagen family comprises several chain types, including fibril-forming interstitial collagens and basement membrane collagens, with each type containing multiple isoforms. Products of the COL gene family, collagens are characterized as fibrous, extracellular matrix proteins with high tensile strength that constitute the major components of connective tissues, such as tendons and cartilage. All collagens contain a triple helix domain and frequently show lateral self-association in order to form complex connective tissues. Collagen Type XVII, also designated BP180, represents a type II transmembrane, epithelial adhesion molecule that plays a role in cell migration and differentiation. The full length Collagen Type XVII protein is expressed in hemidesmosomes of keratinocytes. Proteolytic shedding of Collagen Type XVII results in a species in the extracellular matrix, and this process may be mediated by a disintegrin and metalloprotease (ADAM) family member. The BPAG2 gene, which encodes the Collagen Type XVII protein, maps to human chromosome 10q25.1. Mutations in this gene result in Bullous pemphigoid, an inflammatory subepidermal blistering skin disease associated with an IgG autoimmune response to Collagen Type XVII.

Inhibitor · Natural Compounds · Compound Libraries · Recombinant Proteins

This product is for Research Use Only · Not for Human or Veterinary or Therapeutic Use

Tel:781-999-4286 E_mail:info@targetmol.com Address:34 Washington Street,Wellesley Hills,MA 02481