

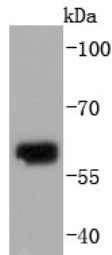
## Anti-Collagen X Antibody (60453)

## Product Details

Ig Type:	IgG
Reactivity:	Human,Mouse,Rat
Conjugation:	Unconjugated
Molecular Weight:	Theoretical: 66 kDa.
Clone:	60453
Purification:	ProA affinity purified

## Applications

Verified Activity: 1. Western blot analysis of Collagen X on human skin lysates using anti-Collagen X antibody at 1/1,000 dilution.



Application:	WB
Recommended	WB: 1:1000-2000

## Properties

Stability & Storage: Store at -20°C or -80°C for 12 months. Avoid repeated freeze-thaw cycles.  
Shipping: Shipping with blue ice.

## Antigen Details

Immunogen:	Recombinant Protein
Uniprot ID:	Q03692 fa66d11;Collagen type X alpha 1(Schmid metaphyseal chondrodysplasia);Schmid metaphyseal chondrodysplasia;COAA1;OTTHUMP00000040411;Collagen X alpha 1 polypeptide;collagen alpha-1(X) chain precursor;wu:fb10c08;collagen X, alpha-1 polypeptide;fb10c08;COL10A1;
Synonyms:	Collagen alpha 1(X) chain;CollagenX;wu:fa66d11;Procollagen type X alpha 1;Collagen type X; Collagen alpha-1(X) chain;Collagen type X alpha 1;Col10a 1

## Research Background

Collagen Type X is associated with hypertrophic chondrocytes of avian and mammalian growth plate tissues during the endochondral growth of long bones. It is a component of normal articular cartilage in adult human, growing pig and newborn rat, and it is also present during any disruption of normal metabolic status of articular cartilage that occur with osteoarthritis. Collagen Type X is composed of three identical  $\alpha 1(X)$  chains, each containing a triple-helical region flanked by a short N-terminal sequence and a larger non-collagenous C-terminal (NC1) domain.

## A DRUG SCREENING EXPERT

---

Mutations in COL10A1, the gene encoding for Collagen Type X, are associated with metaphyseal dysplasia type Schmid (SMCD) and other related forms of metaphyseal dysplasia. SMCD is characterized by short-limbed dwarfism, an outward "flaring" of the lower rib cage, bowed legs, leg pain and a hip deformity that causes the thigh bone to angle toward the center of the body.

**Inhibitor · Natural Compounds · Compound Libraries · Recombinant Proteins**

This product is for Research Use Only · Not for Human or Veterinary or Therapeutic Use

Tel:781-999-4286 E\_mail:info@targetmol.com Address:34 Washington Street,Wellesley Hills,MA 02481