

## Anti-Collagen II/COL2A1 Antibody (1R829)

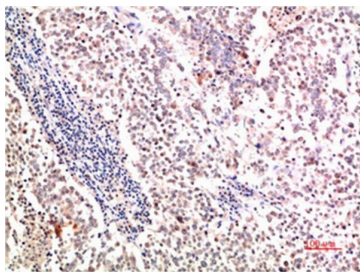
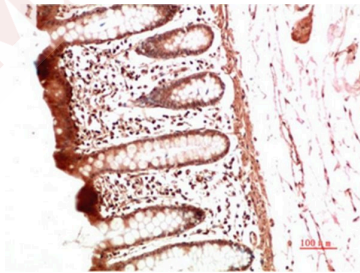
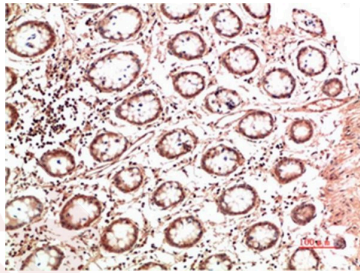
### Product Details

Ig Type:	IgG1
Reactivity:	Human,Mouse,Rat
Conjugation:	Unconjugated
Molecular Weight:	Theoretical: 142 kDa.
Clone:	1R829

### Applications

#### Verified Activity:

1. Immunohistochemical analysis of paraffin-embedded Human Colon Carcinoma Tissue using Collagen II Mouse mAb diluted at 1:500.
2. Immunohistochemical analysis of paraffin-embedded Human Colon Carcinoma Tissue using Collagen II Mouse mAb diluted at 1:500.
3. Immunohistochemical analysis of paraffin-embedded Human Lung Carcinoma Tissue using Collagen II Mouse mAb diluted at 1:500.



Application:	IHC
Recommended	IHC: 1:50-200

**Properties**

Stability & Storage: Store at -20°C or -80°C for 12 months. Avoid repeated freeze-thaw cycles.

Shipping: Shipping with blue ice.

---

**Antigen Details**

Immunogen: A synthesized peptide: Collagen II

Synonyms: STL1;collagen, type II,  $\alpha$ 1;COL11A3;ANFH;collagen, type II, alpha 1;AOM;SEDC

**Inhibitor · Natural Compounds · Compound Libraries · Recombinant Proteins**

This product is for Research Use Only· Not for Human or Veterinary or Therapeutic Use

Tel:781-999-4286 E\_mail:info@targetmol.com Address:34 Washington Street,Wellesley Hills,MA 02481