

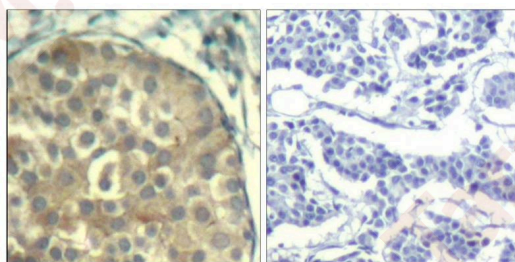
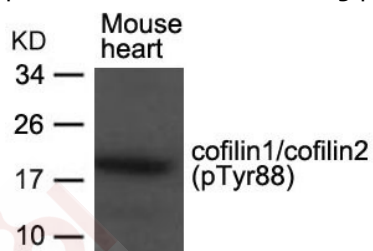
Anti-Phospho-Cofilin (Tyr88) Polyclonal Antibody

Product Details

Ig Type:	IgG
Reactivity:	Human,Mouse,Rat
Conjugation:	Unconjugated
Purification:	Antibodies were produced by immunizing rabbits with synthetic phosphopeptide and KLH conjugates. Antibodies were purified by affinity-chromatography using epitope-specific phosphopeptide. Non-phospho specific antibodies were removed by chromatography using non-phosphopeptide.

Applications

- Verified Activity:
- Western blot analysis of extracts from Mouse heart tissue using cofilin1/cofilin2 (phospho-Tyr88) Antibody TMAC-00910.
 - Immunohistochemical analysis of paraffin-embedded human breast carcinoma tissue using cofilin1/cofilin2 (Phospho-Tyr88) Antibody TMAC-00910 (left) or the same antibody preincubated with blocking peptide (right).



Application: IHC,WB

Properties

Stability & Storage: Store at 2°C-8°C for 1 month. Store at -20°C or -80°C for 12 months. Avoid repeated freeze-thaw cycles.

Shipping: Shipping with blue ice.

Antigen Details

Immunogen:	Peptide sequence around phosphorylation site of tyrosine 88 (A-T-Y(p)-E-T) derived from Human cofilin1/cofilin2
Antigen Species:	human
Uniprot ID:	P23528
Synonyms:	CFL;p-Cofilin (Y88);HEL-S-15;cofilin 1 (non-muscle);Cofilin (p-Y88);p-Cofilin (Tyr88);Cofilin (p-Tyr88)

Research Background

Controls reversibly actin polymerization and depolymerization in a pH-sensitive manner. It has the ability to bind G- and F-actin in a 1:1 ratio of cofilin to actin. It is the major component of intranuclear and cytoplasmic actin rods.

Inhibitor · Natural Compounds · Compound Libraries · Recombinant Proteins

This product is for Research Use Only · Not for Human or Veterinary or Therapeutic Use

Tel:781-999-4286 E_mail:info@targetmol.com Address:34 Washington Street,Wellesley Hills,MA 02481