

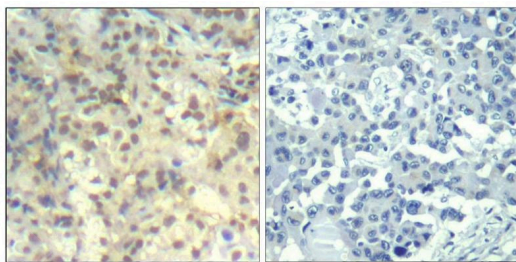
Anti-Phospho-Cofilin (Tyr139) Polyclonal Antibody

Product Details

Ig Type:	IgG
Reactivity:	Human,Mouse,Rat
Conjugation:	Unconjugated
Purification:	Antibodies were produced by immunizing rabbits with synthetic phosphopeptide and KLH conjugates. Antibodies were purified by affinity-chromatography using epitope-specific phosphopeptide. Non-phospho specific antibodies were removed by chromatography using non-phosphopeptide.

Applications

Verified Activity: 1. Immunohistochemical analysis of paraffin-embedded human lung carcinoma tissue using cofilin1 (Phospho-Tyr139) Antibody TMAC-00909 (left) or the same antibody preincubated with blocking peptide (right).



Application: IHC

Properties

Stability & Storage: Store at 2°C-8°C for 1 month. Store at -20°C or -80°C for 12 months. Avoid repeated freeze-thaw cycles.

Shipping: Shipping with blue ice.

Antigen Details

Immunogen: Peptide sequence around phosphorylation site of tyrosine 139 (N-C-Y(p)-E-E) derived from Human cofilin

Antigen Species: human

Uniprot ID: P23528

Synonyms: Cofilin (p-Y139);HEL-S-15;Cofilin (p-Tyr139);p-Cofilin (Tyr139);CFL;p-Cofilin (Y139);cofilin 1 (non-muscle)

Research Background

Controls reversibly actin polymerization and depolymerization in a pH-sensitive manner. It has the ability to bind G- and F-actin in a 1:1 ratio of cofilin to actin. It is the major component of intranuclear and cytoplasmic actin rods.

Inhibitor · Natural Compounds · Compound Libraries · Recombinant Proteins

This product is for Research Use Only · Not for Human or Veterinary or Therapeutic Use

Tel:781-999-4286 E_mail:info@targetmol.com Address:34 Washington Street,Wellesley Hills,MA 02481