

Anti-Phospho-Cofilin (Ser3) Polyclonal Antibody 2

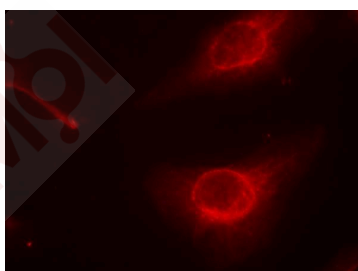
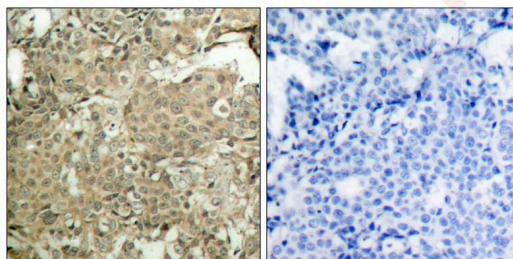
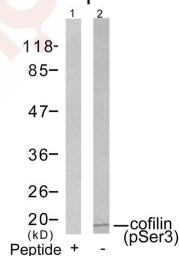
Product Details

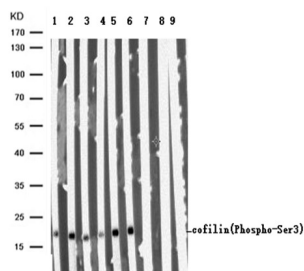
Ig Type:	IgG
Reactivity:	Human, Mouse, Rat
Conjugation:	Unconjugated
Purification:	Antibodies were produced by immunizing rabbits with synthetic phosphopeptide and KLH conjugates. Antibodies were purified by affinity-chromatography using epitope-specific phosphopeptide. Non-phospho specific antibodies were removed by chromatography using non-phosphopeptide.

Applications

Verified Activity:

- Western blot analysis of extracts from COLO205 cells using cofilin (Phospho-Ser3) Antibody TMAC-00908 (Lane 2) and the same antibody preincubated with blocking peptide (Lane 1).
- Immunohistochemical analysis of paraffin-embedded human breast carcinoma tissue using cofilin (Phospho-Ser3) Antibody TMAC-00908 (left) or the same antibody preincubated with blocking peptide (right).
- Immunofluorescence staining of methanol-fixed Hela cells using cofilin (Phospho-Ser3) Antibody TMAC-00908.
- Lane 1 : Helatreated with H₂O₂; Lane 2 : Mouse brain tissue; Lane 3 : Rat brain tissue; Lane 4 : N-peptide blocked Helatreated with H₂O₂; Lane 5 : N-peptide blocked Mouse brain tissue; Lane 6 : N-peptide blocked Rat brain tissue; Lane 7 : P-peptide blocked Helatreated with H₂O₂; Lane 8 : P-peptide blocked Mouse brain tissue; Lane 9 : P-peptide blocked Rat brain tissue; Lysates/proteins at 40 µg per lane. Predicted band size :19 kDa. Observed band size :19 kDa.





Application: IF,IHC,WB

Properties

Stability & Storage: Store at 2°C-8°C for 1 month. Store at -20°C or -80°C for 12 months. Avoid repeated freeze-thaw cycles.

Shipping: Shipping with blue ice.

Antigen Details

Immunogen: Peptide sequence around phosphorylation site of serine 3 (M-A-S(p)-G-V) derived from Human cofilin

Antigen Species: human

Uniprot ID: P23528

Synonyms: HEL-S-15;CFL;Cofilin (p-Ser3);Cofilin (p-S3);cofilin 1 (non-muscle);p-Cofilin (S3);p-Cofilin (Ser3)

Research Background

Controls reversibly actin polymerization and depolymerization in a pH-sensitive manner. It has the ability to bind G- and F-actin in a 1:1 ratio of cofilin to actin. It is the major component of intranuclear and cytoplasmic actin rods.

Inhibitor · Natural Compounds · Compound Libraries · Recombinant Proteins

This product is for Research Use Only · Not for Human or Veterinary or Therapeutic Use

Tel:781-999-4286 E_mail:info@targetmol.com Address:34 Washington Street,Wellesley Hills,MA 02481