

Anti-MYC Polyclonal Antibody

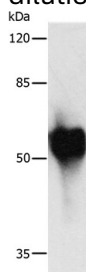
Product Details

Ig Type:	IgG
Conjugation:	Unconjugated
Molecular Weight:	Actual: 55 kDa.
Purification:	Antigen affinity purification.

Applications

Verified Activity:

1. Gel: 10%SDS-PAGE, Lysate: 2ug Recombinant HA tagged protein, Primary antibody: 1/1000 dilution, Secondary antibody dilution: 1/8000, Exposure time: 1 second.



Application:	WB
Recommended	WB: 1:1000-5000

Properties

Stability & Storage:	Store at -20°C or -80°C for 12 months. Avoid repeated freeze-thaw cycles.
Shipping:	Shipping with blue ice.

Antigen Details

Immunogen:	KLH conjugated synthetic peptide: C-EQKLISEEDL
Uniprot ID:	P01106
Synonyms:	bHLHe39

Research Background

A c-myc tag is a polypeptide protein tag derived from the c-myc gene product that can be added to a protein using recombinant DNA technology. It can be used for affinity chromatography, then used to separate recombinant, overexpressed protein from wild type protein expressed by the host organism. It can also be used in the isolation of protein complexes with multiple subunits. A c-myc tag can be used in many different assays that require recognition by an antibody. If there is no antibody against the studied protein, adding a myc-tag allows one to follow the protein with an antibody against the Myc epitope. Examples are cellular localization studies by immunofluorescence or detection by Western blotting. It can be fused to the C-terminus and the N-terminus of a protein. It is advisable not to fuse the tag directly behind the signal peptide of a secretory protein, since it can interfere with translocation into the secretory pathway.

Inhibitor · Natural Compounds · Compound Libraries · Recombinant Proteins

This product is for Research Use Only · Not for Human or Veterinary or Therapeutic Use

Tel:781-999-4286 E_mail:info@targetmol.com Address:34 Washington Street,Wellesley Hills,MA 02481