

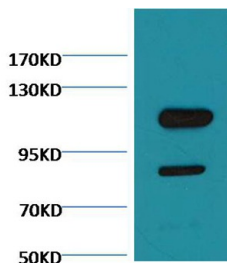
Anti-Cleaved PARP Antibody (7Y437)

Product Details

Reactivity:	Human
Conjugation:	Unconjugated
Molecular Weight:	Actual: 89 kDa.
Clone:	7Y437
Purification:	Affinity purification using immunogen.

Applications

Verified Activity: 1. Western blot analysis of Jurkat, using TMAC-00893 diluted at 1:3,000.



Application:	WB
Recommended	WB: 1:2000-5000

Properties

Stability & Storage: Store at -20°C or -80°C for 12 months. Avoid repeated freeze-thaw cycles.
Shipping: Shipping with blue ice.

Antigen Details

Uniprot ID:	P42574
Synonyms:	poly (ADP-ribose) polymerase 1;ADPRT;ARTD1;ADPRT1;PARP-1;pADPRT-1;PPOL;PARP

Research Background

Poly [ADP-ribose] polymerase 1 (PARP-1) also known as NAD⁺ ADP-ribosyltransferase 1 or poly[ADP-ribose] synthase 1 is an enzyme that in humans is encoded by the PARP1 gene. PARP1 has a role in repair of single-stranded DNA (ssDNA) breaks. Knocking down intracellular PARP1 levels with siRNA or inhibiting PARP1 activity with small molecules reduces repair of ssDNA breaks. In the absence of PARP1, when these breaks are encountered during DNA replication, the replication fork stalls, and double-strand DNA (dsDNA) breaks accumulate.

Inhibitor · Natural Compounds · Compound Libraries · Recombinant Proteins

This product is for Research Use Only. Not for Human or Veterinary or Therapeutic Use

Tel:781-999-4286 E_mail:info@targetmol.com Address:34 Washington Street,Wellesley Hills,MA 02481