

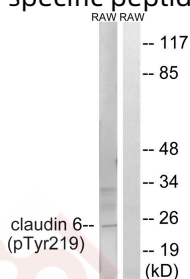
Anti-Phospho-Claudin-6 (Tyr219) Polyclonal Antibody

Product Details

Ig Type:	IgG
Reactivity:	Human,Mouse
Conjugation:	Unconjugated
Molecular Weight:	Actual: 23 kDa.
Purification:	Antibodies were produced by immunizing rabbits with synthetic phosphopeptide and KLH conjugates. Antibodies were purified by affinity-chromatography using epitope-specific phosphopeptide. Non-phospho specific antibodies were removed by chromatography using non-phosphopeptide.

Applications

Verified Activity: 1. Western blot analysis of extracts from RAW264.7 cells treated with UV using Claudin 6 (Phospho-Tyr219) Antibody TMAC-00890. The lane on the right is treated with the antigen-specific peptide.



Application:	WB
Recommended	WB: 1:500-1000

Properties

Stability & Storage:	Store at -20°C or -80°C for 12 months. Avoid repeated freeze-thaw cycles.
Shipping:	Shipping with blue ice.

Antigen Details

Immunogen:	Peptide sequence around phosphorylation site of tyrosine 219 (T-K-N-Y(p)-V) derived from Human Claudin 6
Antigen Species:	human
Uniprot ID:	P56747
Synonyms:	p-Claudin-6 (Y219);Claudin-6 (p-Y219);Claudin-6 (p-Tyr219);p-Claudin-6 (Tyr219)

Research Background

Claudin 6 Plays a major role in tight junction-specific obliteration of the intercellular space. Directly interacts with TJP1/ZO-1, TJP2/ZO-2 and TJP3/ZO- 3.

Inhibitor · Natural Compounds · Compound Libraries · Recombinant Proteins

This product is for Research Use Only · Not for Human or Veterinary or Therapeutic Use

Tel:781-999-4286 E_mail:info@targetmol.com Address:34 Washington Street,Wellesley Hills,MA 02481