

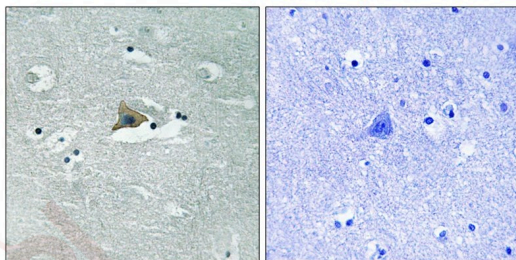
## Anti-Phospho-Claudin-5 (Tyr217) Polyclonal Antibody

### Product Details

Ig Type:	IgG
Reactivity:	Human,Mouse,Rat
Conjugation:	Unconjugated
Molecular Weight:	Actual: 23 kDa.
Purification:	Antibodies were produced by immunizing rabbits with synthetic phosphopeptide and KLH conjugates. Antibodies were purified by affinity-chromatography using epitope-specific phosphopeptide. Non-phospho specific antibodies were removed by chromatography using non-phosphopeptide.

### Applications

Verified Activity: 1. Immunohistochemical analysis of paraffin-embedded human brain tissue using Claudin 5 (Phospho-Tyr217) antibody TMAC-00888 (left) or the same antibody preincubated with blocking peptide (right).



Application:	IF,IHC,WB
Recommended	WB: 1:500-2000; IHC: 1:100-300; IF: 1:50-200

### Properties

Stability & Storage:	Store at -20°C or -80°C for 12 months. Avoid repeated freeze-thaw cycles.
Shipping:	Shipping with blue ice.

### Antigen Details

Immunogen:	Peptide sequence around phosphorylation site of tyrosine 217 (K-K-N-Y(p)-V) derived from Human Claudin 5
Antigen Species:	human
Uniprot ID:	O00501
Synonyms:	p-Claudin-5 (Tyr217);p-Claudin-5 (Y217);Claudin-5 (p-Tyr217);Claudin-5 (p-Y217)

### Research Background

This gene encodes a member of the claudin family. Claudins are integral membrane proteins and components of tight junction strands. Tight junction strands serve as a physical barrier to prevent solutes and water from passing freely through the paracellular space between epithelial or endothelial cell sheets. Mutations in this gene have been found in patients with velocardiofacial syndrome.

**Inhibitor · Natural Compounds · Compound Libraries · Recombinant Proteins**

This product is for Research Use Only · Not for Human or Veterinary or Therapeutic Use

Tel:781-999-4286 E\_mail:info@targetmol.com Address:34 Washington Street,Wellesley Hills,MA 02481