

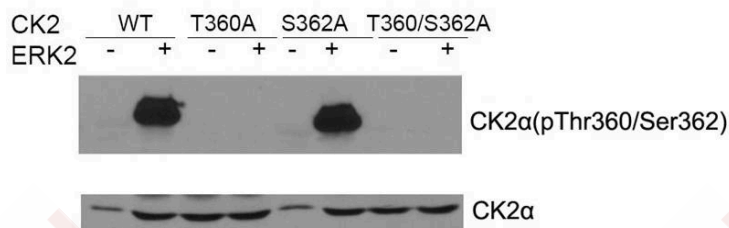
Anti-Phospho-CK2 alpha (Thr360, Ser362) Polyclonal Antibody

Product Details

Ig Type:	IgG
Reactivity:	Human
Conjugation:	Unconjugated
Purification:	Antibodies were produced by immunizing rabbits with synthetic phosphopeptide and KLH conjugates. Antibodies were purified by affinity-chromatography using epitope-specific phosphopeptide. Non-phospho specific antibodies were removed by chromatography using non-phosphopeptide.

Applications

Verified Activity: 1. Western blot of CK2a (Phospho- Thr360/Ser362) antibody (TMAC-00871) and CK2a antibody in vitro kinase assay. Both purified ERK2 and CK2 were used. CK2a(Phospho-Thr360/Ser362) antibody could recognize ERK2 phosphorylated wild type CK2a and CK2a when Ser362 was mutated to alanine .



Application: WB

Properties

Stability & Storage: Store at 2°C-8°C for 1 month. Store at -20°C or -80°C for 12 months. Avoid repeated freeze-thaw cycles.

Shipping: Shipping with blue ice.

Antigen Details

Immunogen: Peptide sequence around phosphorylation site of threonine360/serine 362 (V-P-T(p)-P-S(p)-P-L) derived from Human CK2a

Antigen Species: human

Uniprot ID: P68400

Synonyms: p-CK2 alpha (T360, S362);CK2 alpha (p-T360, S362);p-CK2 alpha (Thr360, Ser362);CK2 alpha (p-Thr360, Ser362)

Research Background

Casein kinases are operationally defined by their preferential utilization of acidic proteins such as caseins as substrates. The a and a' chains contain the catalytic site. Participates in Wnt signaling. CK2 phosphorylates 'Ser-392' of p53/TP53 following UV irradiation.

Inhibitor · Natural Compounds · Compound Libraries · Recombinant Proteins

This product is for Research Use Only · Not for Human or Veterinary or Therapeutic Use

Tel:781-999-4286 E_mail:info@targetmol.com Address:34 Washington Street,Wellesley Hills,MA 02481