

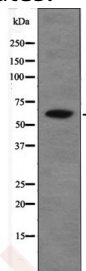
## Anti-Phospho-CHEK2 (Thr26, Ser28) Polyclonal Antibody

## Product Details

Ig Type:	IgG
Reactivity:	Human
Conjugation:	Unconjugated
Molecular Weight:	Theoretical: 62 kDa.
Purification:	Antibodies were produced by immunizing rabbits with synthetic phosphopeptide and KLH conjugates. Antibodies were purified by affinity-chromatography using epitope-specific phosphopeptide. Non-phospho specific antibodies were removed by chromatography using non-phosphopeptide.

## Applications

Verified Activity: 1. Western blot analysis Chk2 (Phospho-Thr26+Ser28) using EGF treated HepG2 whole cell lysates.



Application: WB  
Recommended WB: 1:1000

## Properties

Stability & Storage: Store at -20°C or -80°C for 12 months. Avoid repeated freeze-thaw cycles.  
Shipping: Shipping with blue ice.

## Antigen Details

Immunogen: A synthesized phosphopeptide: human Chk2 around the phosphorylation site of Thr26+Ser28  
Antigen Species: human  
Uniprot ID: O96017  
Synonyms: CHEK2 (p-T26, S28);p-CHEK2 (Thr26, Ser28);CHEK2 (p-Thr26, Ser28);p-CHEK2 (T26, S28)

**Inhibitor · Natural Compounds · Compound Libraries · Recombinant Proteins**

This product is for Research Use Only. Not for Human or Veterinary or Therapeutic Use

Tel:781-999-4286 E\_mail:info@targetmol.com Address:34 Washington Street,Wellesley Hills,MA 02481