

Anti-CHD1L Antibody (7L400)

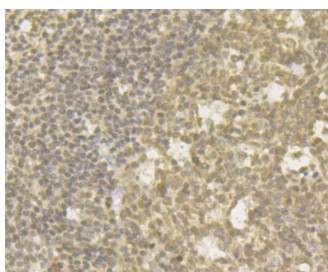
Product Details

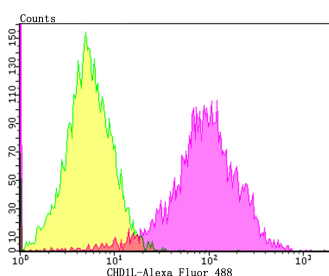
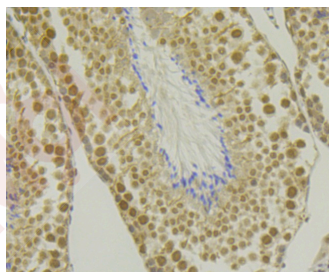
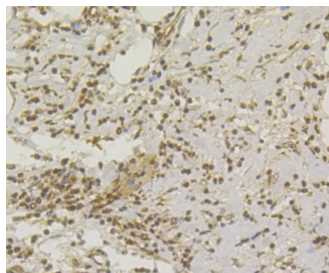
Ig Type:	IgG
Reactivity:	Human,Mouse
Conjugation:	Unconjugated
Molecular Weight:	Theoretical: 101/90 kDa.
Clone:	7L400
Purification:	ProA affinity purified

Applications

Verified Activity:

1. Western blot analysis of CHD1L on HepG2 cell using anti-CHD1L antibody at 1/1,000 dilution.
2. Immunohistochemical analysis of paraffin-embedded human tonsil tissue using anti-CHD1L antibody. Counter stained with hematoxylin. The section was pre-treated using heat mediated antigen retrieval with sodium citrate buffer (pH6) for 20 mins.
3. Immunohistochemical analysis of paraffin-embedded human colon cancer tissue using anti-CHD1L antibody. Counter stained with hematoxylin. The section was pre-treated using heat mediated antigen retrieval with sodium citrate buffer (pH6) for 20 mins.
4. Immunohistochemical analysis of paraffin-embedded mouse testis tissue using anti-CHD1L antibody. Counter stained with hematoxylin. The section was pre-treated using heat mediated antigen retrieval with sodium citrate buffer (pH6) for 20 mins.
5. Flow cytometric analysis of HepG2 cells with CHD1L antibody at 1/100 dilution (purple) compared with an unlabelled control (cells without incubation with primary antibody; yellow). Alexa Fluor 488-conjugated goat anti-rabbit IgG was used as the secondary antibody.





Application: FCM,IHC,WB
Recommended WB: 1:500-1000; IHC: 1:50-100; FCM: 1:50-100

Properties

Stability & Storage: Store at -20°C or -80°C for 12 months. Avoid repeated freeze-thaw cycles.
Shipping: Shipping with blue ice.

Antigen Details

Immunogen: Recombinant Protein: human CHD1L aa 600-800
Antigen Species: human
Uniprot ID: Q86WJ1
Synonyms: Chromodomain-helicase-DNA-binding protein 1-like;ALC1;Amplified in liver cancer protein 1; CHD1L

Research Background

CHD1L (Chromodomain helicase DNA-binding protein 1-like) is a 897 amino acid protein encoded by the human gene CHD1L. The CHD family of proteins are ATP-dependent chromatin remodeling enzymes, which combine chromodomains, with SWI2/SNF2 ATPase/helicase motifs and DNA-binding capability. Chromodomains are protein regions of about 40-50 amino acid residues found in proteins associated with chromatin remodeling and manipulation. The domain is highly conserved among both plants and animals and is found in a large variety of proteins from many genomes. CHD1L and CHD1 share most homology within two internal helicase domains.

Inhibitor · Natural Compounds · Compound Libraries · Recombinant Proteins

This product is for Research Use Only· Not for Human or Veterinary or Therapeutic Use

Tel:781-999-4286 E_mail:info@targetmol.com Address:34 Washington Street,Wellesley Hills,MA 02481