

Anti-CENPC Antibody (3X906)

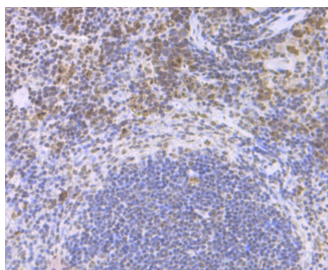
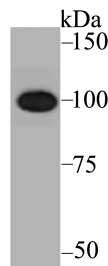
Product Details

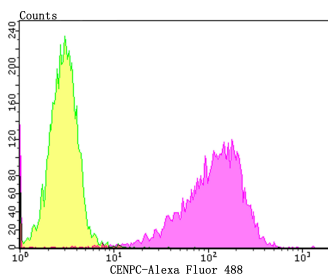
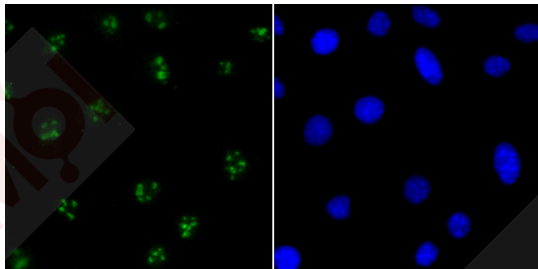
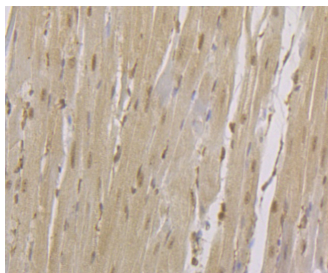
Ig Type:	IgG
Reactivity:	Human
Conjugation:	Unconjugated
Molecular Weight:	Theoretical: 107 kDa.
Clone:	3X906
Purification:	ProA affinity purified

Applications

Verified Activity:

1. Western blot analysis of CENPC on K562 cell lysate using anti-CENPC antibody at 1/1,000 dilution.
2. Immunohistochemical analysis of paraffin-embedded mouse spleen tissue using anti-CENPC antibody. Counter stained with hematoxylin. The section was pre-treated using heat mediated antigen retrieval with sodium citrate buffer (pH6) for 20 mins.
3. Immunohistochemical analysis of paraffin-embedded rat heart tissue using anti-CENPC antibody. Counter stained with hematoxylin. The section was pre-treated using heat mediated antigen retrieval with sodium citrate buffer (pH6) for 20 mins.
4. ICC staining CENPC in SH-SY-5Y cells (green). The nuclear counter stain is DAPI (blue). Cells were fixed in paraformaldehyde, permeabilised with 0.25% Triton X100/PBS.
5. Flow cytometric analysis of K562 cells with CENPC antibody at 1/100 dilution (yellow) compared with an unlabelled control (cells without incubation with primary antibody; purple). Alexa Fluor 488-conjugated goat anti-rabbit IgG was used as the secondary antibody.





Application: FCM, ICC, IF, IHC, IP, WB

Recommended WB: 1:500-2000; IHC: 1:50-200; ICC: 1:50-200; IP: 1:10-50; FCM: 1:50-200

Properties

Stability & Storage: Store at -20°C or -80°C for 12 months. Avoid repeated freeze-thaw cycles.

Shipping: Shipping with blue ice.

Antigen Details

Immunogen: Recombinant Protein: human CENPC aa 400-600

Antigen Species: human

Uniprot ID: Q03188

Synonyms: Centromere autoantigen C1; Centromere protein C 1; Centromere protein C; Interphase centromere complex protein 7; CENP-C 1; hcp-4; MIF2; CENPC1; ICEN7; Centromere autoantigen C; CENP-C; CENPC_HUMAN

Research Background

A replicated chromosome includes two kinetochores that control chromosome segregation during mitosis. The evolutionarily conserved Centromere Protein-C, CENP-C, is a kinetochore assembly protein. CENP-C is located on the fibers of the kinetochore and constitutes a kinetochore organizing center that tightly associates with DNA. CENP-C is necessary for the formation of a functional centromere, which indicates that CENP-C is important for mitotic progression. In addition, CENP-C is lost from centromeres during herpes simplex virus 1 infection, causing substantial structural changes in the kinetochore, which suggests that the structure of CENP-C is regulated during the cell cycle.

Inhibitor · Natural Compounds · Compound Libraries · Recombinant Proteins

This product is for Research Use Only · Not for Human or Veterinary or Therapeutic Use

Tel:781-999-4286 E_mail:info@targetmol.com Address:34 Washington Street,Wellesley Hills,MA 02481