

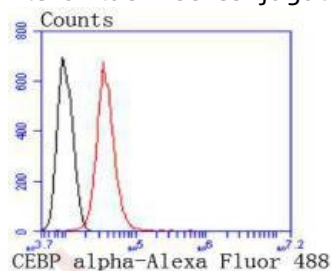
Anti-CEBP alpha Antibody (6R576)

Product Details

Ig Type:	IgG
Reactivity:	Human,Mouse,Rat
Conjugation:	Unconjugated
Molecular Weight:	Theoretical: 43 kDa.
Clone:	6R576
Purification:	ProA affinity purified

Applications

Verified Activity: 1. Flow cytometric analysis of Hela cells with CEBP alpha antibody at 1/50 dilution (red) compared with an unlabelled control (cells without incubation with primary antibody; black). Alexa Fluor 488-conjugated goat anti rabbit IgG was used as the secondary antibody.



Application:	FCM,IP,WB
Recommended	WB: 1:1000; FCM: 1:50-100

Properties

Stability & Storage:	Store at -20°C or -80°C for 12 months. Avoid repeated freeze-thaw cycles.
Shipping:	Shipping with blue ice.

Antigen Details

Immunogen:	Recombinant Protein
Uniprot ID:	P49715
Synonyms:	ICE8;CEBPA;ICE like apoptotic protease 5;Apoptotic cysteine protease;CEBP A;C/EBP alpha; MACH;FADD homologous ICE/CED 3 like protease;CAP4;MCH5;CEBP alpha;CEBP α ;Apoptotic protease Mch 5;MORT1 associated CED 3 homolog;Caspase 8 precursor;FLICE;CCAAT Enhancer Binding Protein alpha;FADD Like ICE

Research Background

The transcription factor C/EBP α (CCAAT-enhancer binding protein) is a heat-stable, sequence-specific DNA-binding protein that binds avidly to several different cis-regulatory DNA sequences commonly associated with viral and cellular genes transcribed by RNA polymerase II. C/EBP α regulates gene expression in a variety of tissues including liver, adipose, lung and intestine. C/EBP α is a basic region/leucine zipper transcription factor selectively expressed during the differentiation of liver, adipose tissue, blood cells and the endocrine pancreas. C/EBP α uses a bipartite

A DRUG SCREENING EXPERT

structural motif to bind DNA and appears to function exclusively in terminally differentiated, growth-arrested cells. In the liver, C/EBP α is a transactivator of several genes, which are regulated by growth hormone. Growth hormone enhances not only the levels of C/EBP α mRNA and protein, but also the DNA binding activity of C/EBP α . C/EBP α functions as an important transcription factor that regulates different genes, including prolactin gene expression.

Inhibitor · Natural Compounds · Compound Libraries · Recombinant Proteins

This product is for Research Use Only · Not for Human or Veterinary or Therapeutic Use

Tel:781-999-4286 E_mail:info@targetmol.com Address:34 Washington Street,Wellesley Hills,MA 02481