

Anti-CDX2 Antibody (1N738)

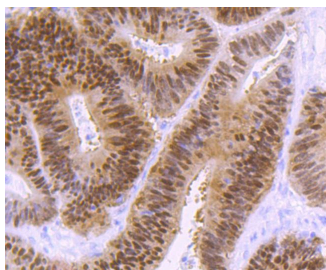
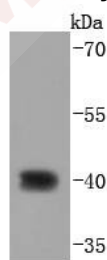
Product Details

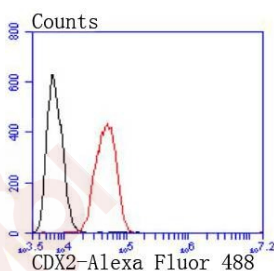
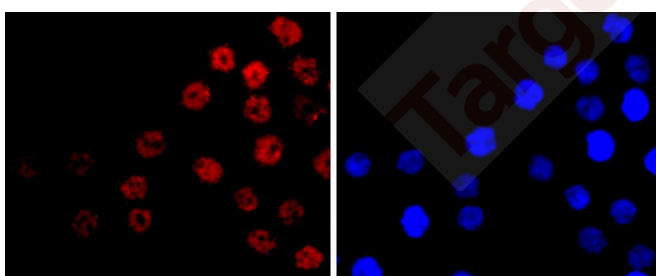
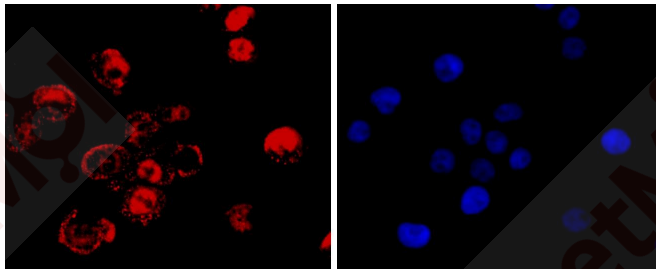
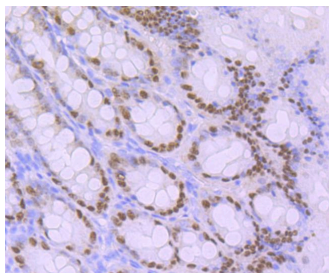
Ig Type:	IgG
Reactivity:	Human,Rat,Rabbit
Conjugation:	Unconjugated
Molecular Weight:	Theoretical: 34 kDa.
Clone:	1N738
Purification:	ProA affinity purified

Applications

Verified Activity:

1. Western blot analysis of CDX2 on AGS cells lysates using anti-CDX2 antibody at 1/1,000 dilution.
2. Immunohistochemical analysis of paraffin-embedded human colon cancer tissue using anti-CDX2 antibody. Counter stained with hematoxylin.
3. Immunohistochemical analysis of paraffin-embedded rat large intestine tissue using anti-CDX2 antibody. Counter stained with hematoxylin.
4. ICC staining CDX2 in LOVO cells (red). The nuclear counter stain is DAPI (blue). Cells were fixed in paraformaldehyde, permeabilised with 0.25% Triton X100/PBS.
5. ICC staining CDX2 in AGS cells (red). The nuclear counter stain is DAPI (blue). Cells were fixed in paraformaldehyde, permeabilised with 0.25% Triton X100/PBS.
6. Flow cytometric analysis of Hela cells with CDX2 antibody at 1/50 dilution (red) compared with an unlabelled control (cells without incubation with primary antibody; black). Alexa Fluor 488-conjugated goat anti rabbit IgG was used as the secondary antibody.





Application: FCM, ICC/IF, IHC, WB

Recommended WB: 1:1000-2000; IHC: 1:50-200; ICC/IF: 1:50-200; FCM: 1:50-100

Properties

Stability & Storage: Store at -20°C or -80°C for 12 months. Avoid repeated freeze-thaw cycles.

Shipping: Shipping with blue ice.

Antigen Details

Immunogen: Recombinant Protein

Uniprot ID: Q99626

Synonyms: Caudal type homeobox protein 2; caudal type homeobox 2; CDX-3; caudal type homeobox transcription factor 2; Homeobox protein CDX 2; CDX 2; Homeobox protein CDX-2; caudal type homeo box transcription factor 2; CDX 3; CDX3; CDX2_HUMAN; Caudal type homeo box 2; CDX2; Caudal-type homeobox protein 2

Research Background

The members of the murine Cdx family (Cdx1, Cdx2, and Cdx4) are members of the caudal-type homeobox family of genes, which are homologues of the *Drosophila* 'caudal' gene required for anterior-posterior regional identity. The intestine-specific transcription factors Cdx1 and Cdx2 are candidate genes for directing intestinal development, differentiation, proliferation and maintenance of the intestinal phenotype. The relative expression of Cdx1 to Cdx2 protein may be important in the anterior to posterior patterning of the intestinal epithelium and in defining patterns of proliferation and differentiation along the crypt-villus axis. Cdx1 and Cdx2 are expressed in the small intestine and colon of fetus and adult. A decrease in human Cdx1 and/or Cdx2 expression is associated with colorectal tumorigenesis. Both Cdx1 and Cdx2 genes must be expressed to reduce tumorigenic potential, to increase sensitivity to apoptosis, and to reduce cell migration, suggesting that the two genes control the normal phenotype by independent pathways.

Inhibitor · Natural Compounds · Compound Libraries · Recombinant Proteins

This product is for Research Use Only · Not for Human or Veterinary or Therapeutic Use

Tel:781-999-4286 E_mail:info@targetmol.com Address:34 Washington Street,Wellesley Hills,MA 02481