

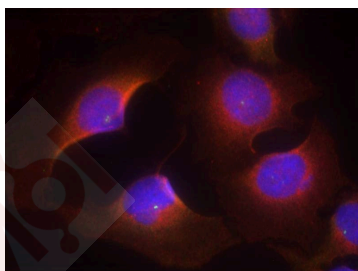
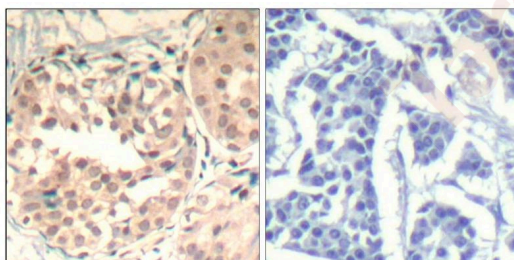
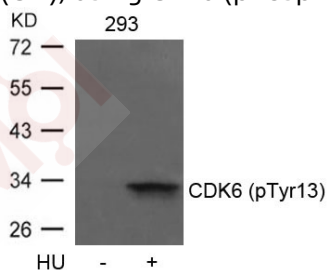
## Anti-Phospho-CDK6 (Tyr13) Polyclonal Antibody

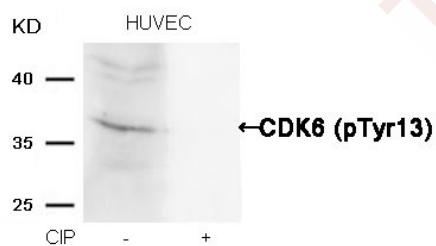
### Product Details

Ig Type:	IgG
Reactivity:	Human,Mouse,Rat
Conjugation:	Unconjugated
Purification:	Antibodies were produced by immunizing rabbits with synthetic phosphopeptide and KLH conjugates. Antibodies were purified by affinity-chromatography using epitope-specific phosphopeptide. Non-phospho specific antibodies were removed by chromatography using non-phosphopeptide.

### Applications

- Verified Activity:
1. Western blot analysis of extracts from 293 cells untreated or treated with HU using CDK6 (phospho-Tyr13) Antibody TMAC-00798.
  2. Immunohistochemical analysis of paraffin-embedded human breast carcinoma tissue using CDK6 (Phospho-Tyr13) Antibody TMAC-00798 (left) or the same antibody preincubated with blocking peptide (right).
  3. Immunofluorescence staining of methanol-fixed Hela cells using CDK6 (phospho-Tyr13) Antibody TMAC-00798.
  4. Western blot analysis of extracts from HUVEC cells, treated with calf intestinal phosphatase (CIP), using CDK6 (phospho-Tyr13) Antibody TMAC-00798.





Application: IF,IHC,WB

### Properties

Stability & Storage: Store at 2°C-8°C for 1 month. Store at -20°C or -80°C for 12 months. Avoid repeated freeze-thaw cycles.

Shipping: Shipping with blue ice.

### Antigen Details

Immunogen: Peptide sequence around phosphorylation site of tyrosine 13 (Q-Q-Y(p)-E-C) derived from Human CDK6

Antigen Species: human

Uniprot ID: Q00534

Synonyms: p-CDK6 (Y13);CDK6 (p-Tyr13);p-CDK6 (Tyr13);CDK6 (p-Y13)

### Research Background

Probably involved in the control of the cell cycle. Interacts with D-type G1 cyclins.

**Inhibitor · Natural Compounds · Compound Libraries · Recombinant Proteins**

This product is for Research Use Only · Not for Human or Veterinary or Therapeutic Use

Tel:781-999-4286 E\_mail:info@targetmol.com Address:34 Washington Street,Wellesley Hills,MA 02481