

## Anti-CDK5 Antibody (8M152)

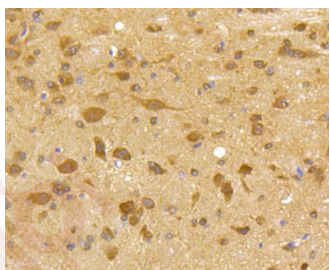
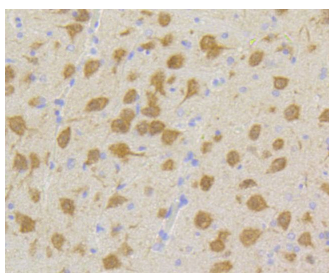
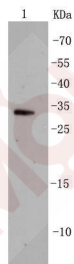
### Product Details

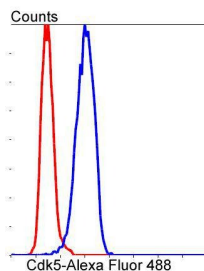
Ig Type:	IgG
Reactivity:	Human,Mouse,Rat
Conjugation:	Unconjugated
Molecular Weight:	Theoretical: 33 kDa.
Clone:	8M152
Purification:	ProA affinity purified

### Applications

#### Verified Activity:

1. Western blot analysis of Cdk5 on Hela cell lysates using anti-Cdk5 antibody at 1/500 dilution.
2. Immunohistochemical analysis of paraffin-embedded rat brain tissue using anti-Cdk5 antibody. Counter stained with hematoxylin.
3. Immunohistochemical analysis of paraffin-embedded mouse brain tissue using anti-Cdk5 antibody. Counter stained with hematoxylin.
4. Flow cytometric analysis of Hela cells with Cdk5 antibody at 1/50 dilution (blue) compared with an unlabelled control (cells without incubation with primary antibody; red). Alexa Fluor 488-conjugated goat anti rabbit IgG was used as the secondary antibody.





Application: FCM,IHC,IP,WB

Recommended WB: 1:500-1000; IHC: 1:50-200; FCM: 1:50-100

### Properties

Stability & Storage: Store at -20°C or -80°C for 12 months. Avoid repeated freeze-thaw cycles.

Shipping: Shipping with blue ice.

### Antigen Details

Immunogen: Recombinant Protein

Uniprot ID: Q00535

Synonyms: cyclin-dependent kinase 5;PSSALRE

### Research Background

Cell cycle progression is controlled in part by a family of cyclin proteins and cyclin dependent kinases (Cdks). Cdk proteins work in concert with the cyclins to phosphorylate key substrates involved in each phase of cell cycle progression. Another family of proteins, Cdk inhibitors, also plays a role in regulating cell cycle by binding to cyclin-Cdk complexes and modulating their activity. Several Cdk proteins have been identified, including Cdk2-Cdk8, PCTAIRE-1?C3, PITALRE and PITSLRE. Cdk5 is thought to be involved in the G1-S transition of the cell cycle and is highly expressed in mature neurons. Activity of Cdk5 increases significantly during neuronal differentiation. Cdk5 has been postulated to be a neurofilament or tau protein kinase, based on its ability to phosphorylate these proteins in vitro.

**Inhibitor · Natural Compounds · Compound Libraries · Recombinant Proteins**

This product is for Research Use Only · Not for Human or Veterinary or Therapeutic Use

Tel:781-999-4286 E\_mail:info@targetmol.com Address:34 Washington Street,Wellesley Hills,MA 02481