

Anti-Phospho-CDK2 (Thr160) Polyclonal Antibody 2

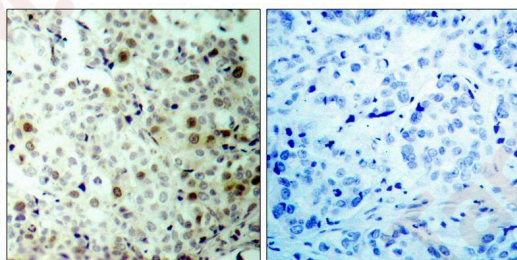
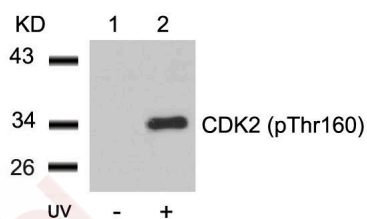
Product Details

Ig Type:	IgG
Reactivity:	Human,Mouse,Rat
Conjugation:	Unconjugated
Purification:	Antibodies were produced by immunizing rabbits with synthetic phosphopeptide and KLH conjugates. Antibodies were purified by affinity-chromatography using epitope-specific phosphopeptide. Non-phospho specific antibodies were removed by chromatography using non-phosphopeptide.

Applications

1. Western blot analysis of extracts from Hela cells untreated (lane 1) or treated with UV (lane 2) using CDK2 (Phospho-Thr160) Antibody TMAC-00789.
2. Immunohistochemical analysis of paraffin-embedded human breast carcinoma tissue using CDK2 (Phospho-Thr160) Antibody TMAC-00789 (left) or the same antibody preincubated with blocking peptide (right).

Verified Activity:



Application: IHC,WB

Properties

- Stability & Storage: Store at 2°C-8°C for 1 month. Store at -20°C or -80°C for 12 months. Avoid repeated freeze-thaw cycles.
- Shipping: Shipping with blue ice.

Antigen Details

Immunogen: Peptide sequence around phosphorylation site of threonine 160 (T-Y-T(p)-H-E) derived from Human CDK2

Antigen Species: Human

Uniprot ID: P24941

Synonyms: p-CDK2 (T160);p-CDK2 (Thr160);CDK2 (p-Thr160);CDK2 (p-T160)

Research Background

Involved in the control of the cell cycle. Interacts with cyclins A, B1, B3, D, or E. Activity of CDK2 is maximal during S phase and G2.

Inhibitor · Natural Compounds · Compound Libraries · Recombinant Proteins

This product is for Research Use Only · Not for Human or Veterinary or Therapeutic Use

Tel:781-999-4286 E_mail:info@targetmol.com Address:34 Washington Street,Wellesley Hills,MA 02481