

## Anti-CDCP1 Antibody (2R354)

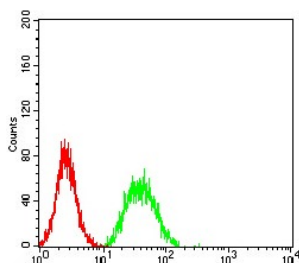
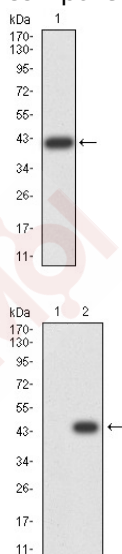
### Product Details

Reactivity:	Human
Conjugation:	Unconjugated
Molecular Weight:	Theoretical: 93 kDa.
Clone:	2R354
Purification:	ProA affinity purified

### Applications

#### Verified Activity:

1. Western blot analysis of CDCP1 on human CDCP1 recombinant protein using anti-CDCP1 antibody at 1/1,000 dilution.
2. Western blot analysis of CDCP1 on HEK293 (1) and CDCP1-hlgGfc transfected HEK293 (2) cell lysate using anti-CDCP1 antibody at 1/1,000 dilution.
3. Flow cytometric analysis of Hela cells with CDCP1 antibody at 1/100 dilution (green) compared with an unlabelled control (cells without incubation with primary antibody; red).



Application:	IHC,WB
Recommended	WB: 1:500-2000; IHC: 1:200-500

### Properties

Stability & Storage: Store at -20°C or -80°C for 12 months. Avoid repeated freeze-thaw cycles.

Shipping: Shipping with blue ice.

---

### Antigen Details

Immunogen: Recombinant Protein

Uniprot ID: Q9H5V8

Synonyms: CUB domain containing protein 1;CD318;SIMA135;TRASK

---

### Research Background

CDCP1 (CUB-domain-containing protein 1) contains three extracellular CUB domains, a transmembrane domain, and two putative cytoplasmic tyrosine phosphorylation sites. Phosphorylation of the gp140 and p80 proteins is mediated by Src family kinases at various tyrosine residues, including Tyr 734. PTP family members mediate the desphosphorylation of CDCP1. The conversion of gp140 to p80 prolongs the phosphorylation state, which may affect signaling in epithelial wounds. CDCP1 acts as a marker for hematopoietic cells and also exhibits high expression in metastatic colon and breast tumors.

**Inhibitor · Natural Compounds · Compound Libraries · Recombinant Proteins**

This product is for Research Use Only · Not for Human or Veterinary or Therapeutic Use

Tel:781-999-4286 E\_mail:info@targetmol.com Address:34 Washington Street,Wellesley Hills,MA 02481