

Anti-CDC5L Antibody (8R159)

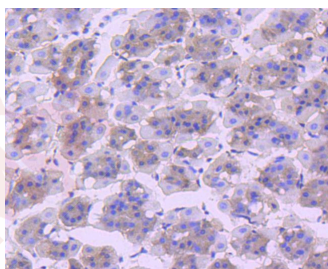
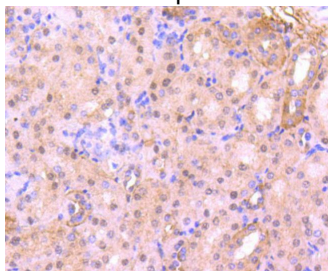
Product Details

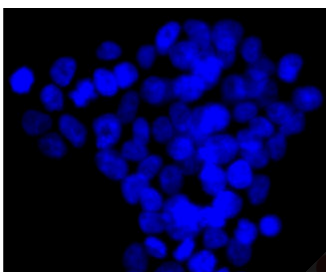
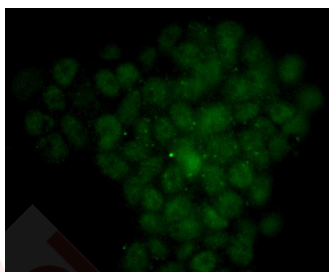
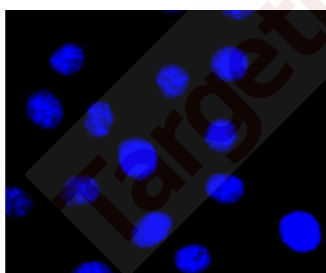
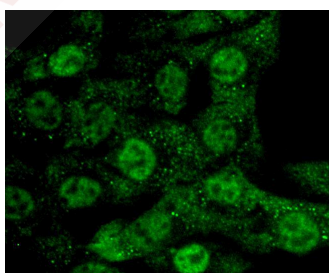
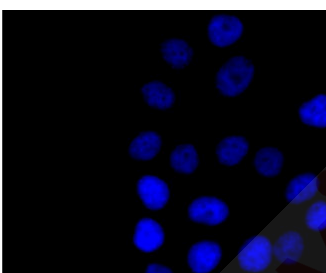
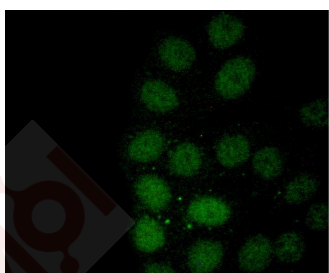
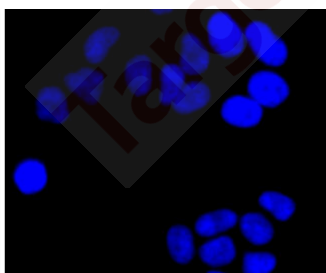
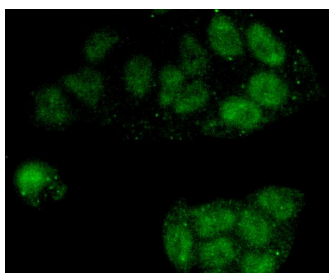
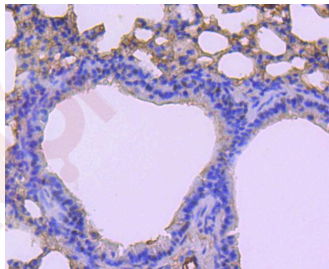
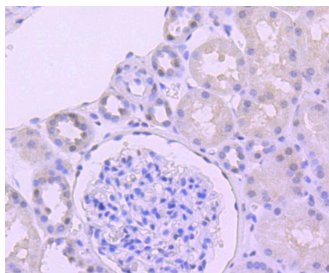
| | |
|-------------------|--------------------------|
| Ig Type: | IgG |
| Reactivity: | Human,Mouse,Rat |
| Conjugation: | Unconjugated |
| Molecular Weight: | Theoretical: 92/100 kDa. |
| Clone: | 8R159 |
| Purification: | ProA affinity purified |

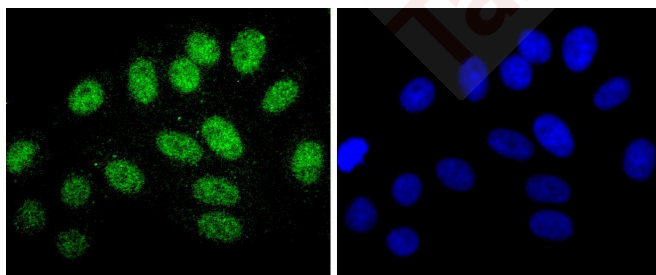
Applications

Verified Activity:

1. Immunohistochemical analysis of paraffin-embedded mouse kidney tissue using anti-CDC5L antibody. Counter stained with hematoxylin.
2. Immunohistochemical analysis of paraffin-embedded mouse stomach tissue using anti-CDC5L antibody. Counter stained with hematoxylin.
3. Immunohistochemical analysis of paraffin-embedded human kidney tissue using anti-CDC5L antibody. Counter stained with hematoxylin.
4. Immunohistochemical analysis of paraffin-embedded mouse lung tissue using anti-CDC5L antibody. Counter stained with hematoxylin.
5. ICC staining CDC5L in Hela cells (green). The nuclear counter stain is DAPI (blue). Cells were fixed in paraformaldehyde, permeabilised with 0.25% Triton X100/PBS.
6. ICC staining CDC5L in NIH/3T3 cells (green). The nuclear counter stain is DAPI (blue). Cells were fixed in paraformaldehyde, permeabilised with 0.25% Triton X100/PBS.
7. ICC staining CDC5L in 293T cells (green). The nuclear counter stain is DAPI (blue). Cells were fixed in paraformaldehyde, permeabilised with 0.25% Triton X100/PBS.
8. ICC staining CDC5L in HepG2 cells (green). The nuclear counter stain is DAPI (blue). Cells were fixed in paraformaldehyde, permeabilised with 0.25% Triton X100/PBS.
9. ICC staining CDC5L in SH-SY-5Y cells (green). The nuclear counter stain is DAPI (blue). Cells were fixed in paraformaldehyde, permeabilised with 0.25% Triton X100/PBS.







Application: ICC/IF,IHC,WB

Recommended WB: 1:1000; IHC: 1:50-200; ICC/IF: 1:50-200

Properties

Stability & Storage: Store at -20°C or -80°C for 12 months. Avoid repeated freeze-thaw cycles.

Shipping: Shipping with blue ice.

Antigen Details

Immunogen: Recombinant Protein

Uniprot ID: Q99459

Synonyms: dj319D22.1;CDC5-LIKE;CDC5;Cell division cycle 5-like protein;PCDC5RP;Cell division cycle 5 S. pombe homolog;Cdc5 related protein;Pombe Cdc5 related protein;KIAA0432;CDC5 cell division cycle 5-like (S. pombe);CEF1

Research Background

Cdc5L (Cell division cycle 5-like protein, Pombe Cdc5-related protein) is a DNA-binding protein encoded by the human gene CDC5L. Cdc5L contains 2 HTH myb-type DNA-binding domains and may shuttle between cytoplasm and nucleus. It is involved in cell cycle control and may act as a transcription activator. CDC5L is a spliceosomal protein that is highly conserved across species. It is a member of a protein group that comprise the core of spliceosomal complexes and are essential for pre-mRNA splicing. Cdc5L is involved in the second catalytic step of pre-mRNA splicing, which involves cleavage at the 3' splice site and the ligation of the exons. This process releases the intact intron lariat. A chromosomal aberration involving Cdc5L is found in multicystic renal dysplasia. This aberration is caused by a translocation with USF-2.

Inhibitor · Natural Compounds · Compound Libraries · Recombinant Proteins

This product is for Research Use Only · Not for Human or Veterinary or Therapeutic Use

Tel:781-999-4286 E_mail:info@targetmol.com Address:34 Washington Street,Wellesley Hills,MA 02481
