

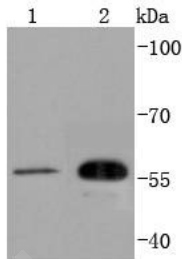
Anti-CDC42EP1 Antibody (6M51)

Product Details

Ig Type:	IgG
Reactivity:	Human
Conjugation:	Unconjugated
Molecular Weight:	Theoretical: 60 kDa.
Clone:	6M51
Purification:	ProA affinity purified

Applications

Verified Activity: 1. Western blot analysis of CDC42EP1 on different lysates using anti-CDC42EP1 antibody at 1/1,000 dilution. Positive control: Lane 1: HUVEC, Lane 2: Hela.



Application:	WB
Recommended	WB: 1:1000-2000

Properties

Stability & Storage:	Store at -20°C or -80°C for 12 months. Avoid repeated freeze-thaw cycles.
Shipping:	Shipping with blue ice.

Antigen Details

Immunogen:	Recombinant Protein
Uniprot ID:	Q00587
Synonyms:	MGC15316;Cdc42ep1;CEP1;BORG5_HUMAN;Serum protein MSE55;CEP 1;MSE 55;Binder of Rho GTPases 5;MSE55;Cdc42 effector protein 1;Bone marrow stromal/endothelial cell protein, 55-KD;CDC42 effector protein (Rho GTPase binding) 1;55 kDa bone marrow stromal/endothelial cell protein;OTTHUMP00000028709;BORG 5;Serum constituent protein;BORG5

Research Background

MSE55 also known as Borg5 or binder of Rho GTPases 5 is a Cdc42 effector protein that induces long cellular extensions in fibroblasts. MSE55 also increases and mediates actin cytoskeleton reorganization at the plasma membrane. MSE55 is a nonkinase CRIB (Cdc42/Rac interactive-binding) domain-containing molecule. An intact CRIB domain is required for the GTP-dependent binding of MSE55 to Cdc42. MSE55 is expressed in a tissue-specific manner in endothelial and bone marrow stromal cells. MSE55 may have a functional role in hematopoiesis or as a negative regulator of Rho GTPase signaling.

Inhibitor · Natural Compounds · Compound Libraries · Recombinant Proteins

This product is for Research Use Only · Not for Human or Veterinary or Therapeutic Use

Tel:781-999-4286 E_mail:info@targetmol.com Address:34 Washington Street,Wellesley Hills,MA 02481