

## Anti-CDC42 Antibody (2L809)

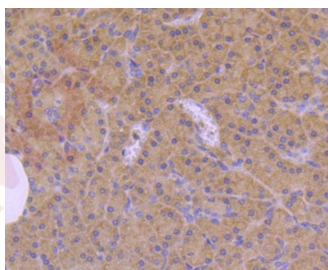
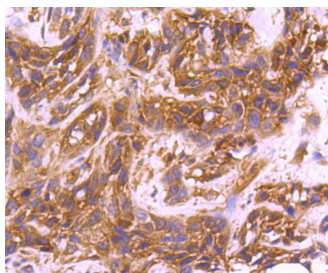
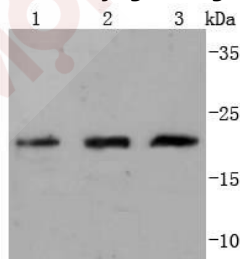
### Product Details

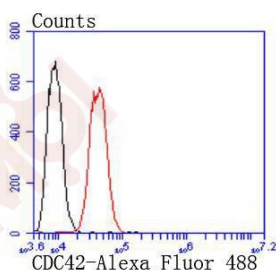
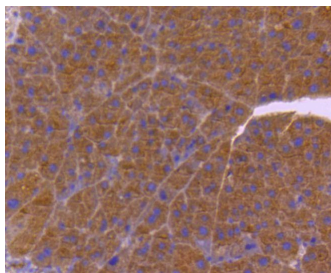
Ig Type:	IgG
Reactivity:	Human,Mouse,Rat
Conjugation:	Unconjugated
Molecular Weight:	Theoretical: 21 kDa.
Clone:	2L809
Purification:	ProA affinity purified

### Applications

#### Verified Activity:

1. Western blot analysis of CDC42 on different lysates using anti-CDC42 antibody at 1/1,000 dilution. Positive control: Lane 1: HeLa, Lane 2: Jurkat, Lane 3: HepG2.
2. Immunohistochemical analysis of paraffin-embedded human breast carcinoma tissue using anti-CDC42 antibody. Counter stained with hematoxylin.
3. Immunohistochemical analysis of paraffin-embedded human pancreas tissue using anti-CDC42 antibody. Counter stained with hematoxylin.
4. Immunohistochemical analysis of paraffin-embedded mouse pancreas tissue using anti-CDC42 antibody. Counter stained with hematoxylin.
5. Flow cytometric analysis of HeLa cells with CDC42 antibody at 1/50 dilution (red) compared with an unlabelled control (cells without incubation with primary antibody; black). Alexa Fluor 488-conjugated goat anti rabbit IgG was used as the secondary antibody.





Application: FCM,IHC,IP,WB

Recommended WB: 1:1000; IHC: 1:50-200; FCM: 1:50-100

### Properties

Stability & Storage: Store at -20°C or -80°C for 12 months. Avoid repeated freeze-thaw cycles.

Shipping: Shipping with blue ice.

### Antigen Details

Immunogen: Recombinant Protein

Uniprot ID: P60953

Synonyms: CDC42Hs;cell division cycle 42;G25K

### Research Background

The superfamily of GTP-binding proteins, for which the Ras proteins are prototypes, has been implicated in regulation of diverse biological activities involving various aspects of cell growth and division. One mammalian member of the family, Cdc42, has an amino acid sequence that is similar to those of various members of the Ras superfamily proteins, including N-, K- and H-Ras, Rho proteins and the Rac proteins. On the basis of in vitro phosphorylation studies, it has been suggested that human Cdc42 may function in the signaling pathway of the EGF receptor or related growth factor receptor protein kinases. The Dbl oncogene has been shown to specifically catalyze dissociation of GDP from human Cdc42.

**Inhibitor · Natural Compounds · Compound Libraries · Recombinant Proteins**

This product is for Research Use Only · Not for Human or Veterinary or Therapeutic Use

Tel:781-999-4286 E\_mail:info@targetmol.com Address:34 Washington Street,Wellesley Hills,MA 02481