

Anti-CDC37 Antibody (9W150)

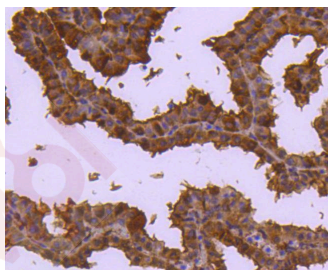
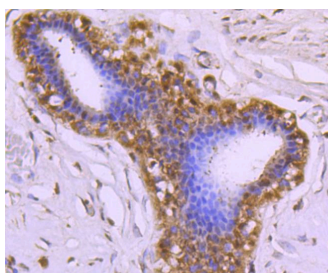
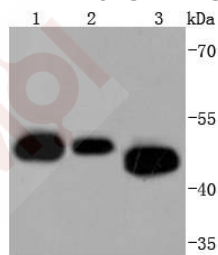
Product Details

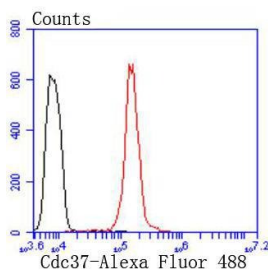
Ig Type:	IgG
Reactivity:	Human,Mouse,Rat
Conjugation:	Unconjugated
Molecular Weight:	Theoretical: 45 kDa.
Clone:	9W150
Purification:	ProA affinity purified

Applications

Verified Activity:

1. Western blot analysis of Cdc37 on different lysates using anti-Cdc37 antibody at 1/1,000 dilution. Positive control: Lane 1: Jurkat, Lane 2: A431, Lane 3: K562.
2. Immunohistochemical analysis of paraffin-embedded mouse liver tissue using anti-Cdc37 antibody. Counter stained with hematoxylin.
3. Immunohistochemical analysis of paraffin-embedded mouse placenta tissue using anti-Cdc37 antibody. Counter stained with hematoxylin.
4. Flow cytometric analysis of Hela cells with Cdc37 antibody at 1/50 dilution (red) compared with an unlabelled control (cells without incubation with primary antibody; black). Alexa Fluor 488-conjugated goat anti rabbit IgG was used as the secondary antibody.





Application: FCM,IHC,IP,WB

Recommended WB: 1:1000-5000; IHC: 1:50-200; FCM: 1:50-100

Properties

Stability & Storage: Store at -20°C or -80°C for 12 months. Avoid repeated freeze-thaw cycles.

Shipping: Shipping with blue ice.

Antigen Details

Immunogen: Recombinant Protein

Uniprot ID: Q16543

Synonyms: P50CDC37;cell division cycle 37

Research Background

Cell cycle events are regulated by the sequential activation and deactivation of cyclin dependent kinases (Cdks) and by the proteolysis of cyclins. The cell division cycle (Cdc) genes are required at various points in the cell cycle. Cdc25A, Cdc25B and Cdc25C protein tyrosine phosphatases function as mitotic activators by dephosphorylating Cdc2 p34 on regulatory tyrosine residues. Cdc6 is the human homolog of *Saccharomyces cerevisiae* Cdc6, which is involved in the initiation of DNA replication. Cdc37 appears to facilitate Cdk4/cyclin D1 complex formation and has been shown to form a stable complex with Hsp90. Cdc34, Cdc27 and Cdc16 function as ubiquitin-conjugating enzymes. Cdc34 is thought to be the structural and functional homolog of *Saccharomyces cerevisiae* Cdc34, which is essential for the G1 to S phase transition. Cdc16 and Cdc27 are components of the APC (anaphase-promoting complex) which ubiquitinates cyclin B, resulting in cyclin B/Cdk complex degradation.

Inhibitor · Natural Compounds · Compound Libraries · Recombinant Proteins

This product is for Research Use Only · Not for Human or Veterinary or Therapeutic Use

Tel:781-999-4286 E_mail:info@targetmol.com Address:34 Washington Street,Wellesley Hills,MA 02481
