

Anti-CDC34 Antibody (7P182)

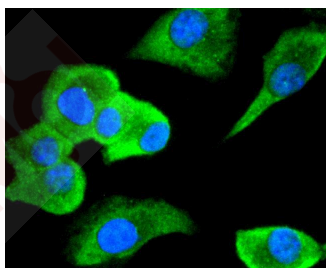
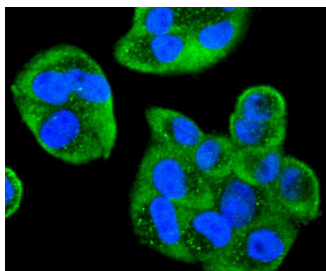
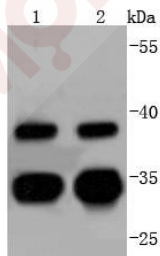
Product Details

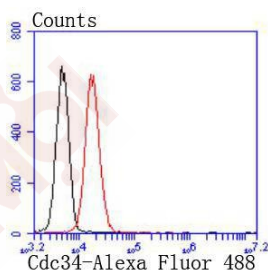
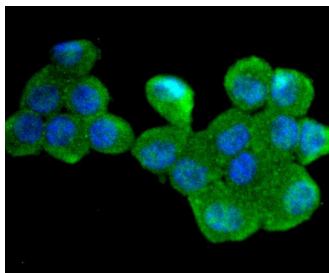
Ig Type:	IgG
Reactivity:	Human,Mouse,Rat
Conjugation:	Unconjugated
Molecular Weight:	Theoretical: 34 kDa.
Clone:	7P182
Purification:	ProA affinity purified

Applications

Verified Activity:

1. Western blot analysis of Cdc34 on different lysates using anti-Cdc34 antibody at 1/1,000 dilution. Positive control: Lane 1: K562, Lane 2: Jurkat.
2. ICC staining Cdc34 in Hela cells (green). The nuclear counter stain is DAPI (blue). Cells were fixed in paraformaldehyde, permeabilised with 0.25% Triton X100/PBS.
3. ICC staining Cdc34 in A549 cells (green). The nuclear counter stain is DAPI (blue). Cells were fixed in paraformaldehyde, permeabilised with 0.25% Triton X100/PBS.
4. ICC staining Cdc34 in N2A cells (green). The nuclear counter stain is DAPI (blue). Cells were fixed in paraformaldehyde, permeabilised with 0.25% Triton X100/PBS.
5. Flow cytometric analysis of Jurkat cells with Cdc34 antibody at 1/50 dilution (red) compared with an unlabelled control (cells without incubation with primary antibody; black). Alexa Fluor 488-conjugated goat anti rabbit IgG was used as the secondary antibody.





Application: FCM, ICC/IF, IP, WB

Recommended WB: 1:1000-5000; ICC/IF: 1:100-500; FCM: 1:50-100

Properties

Stability & Storage: Store at -20°C or -80°C for 12 months. Avoid repeated freeze-thaw cycles.

Shipping: Shipping with blue ice.

Antigen Details

Immunogen: Recombinant Protein

Uniprot ID: P49427

Synonyms: UBC 3; Cdc 34; Cell division cycle 34; Ubiquitin-conjugating enzyme E2-32 kDa complementing; E2 CDC34; Cell division cycle 34 homolog (S. cerevisiae); Ubiquitin-conjugating enzyme E2-CDC34; UBCH3; Ubiquitin conjugating enzyme Cdc34; Ubiquitin carrier protein; Ubiquitin-protein ligase R1; Cdc34; Ubiquitin protein ligase R1; Ubiquitin conjugating enzyme E2 32 kDa complementing; Ubiquitin protein ligase; UBE2R1; UBE2 R1; UB2R1_HUMAN; Cell division cycle 34 homolog; Ubiquitin-conjugating enzyme E2 R1; UBC3

Research Background

Cell cycle events are regulated by the sequential activation and deactivation of cyclin dependent kinases (Cdks) and by the proteolysis of cyclins. The cell division cycle (Cdc) genes are required at various points in the cell cycle. Cdc25A, Cdc25B and Cdc25C protein tyrosine phosphatases function as mitotic activators by dephosphorylating Cdc2 p34 on regulatory tyrosine residues. Cdc6 is the human homolog of *Saccharomyces cerevisiae* Cdc6, which is involved in the initiation of DNA replication. Cdc37 appears to facilitate Cdk4/cyclin D1 complex formation and has been shown to form a stable complex with Hsp90. Cdc34, Cdc27 and Cdc16 function as ubiquitin-conjugating enzymes. Cdc34 is thought to be the structural and functional homolog of *Saccharomyces cerevisiae* Cdc34, which is essential for the G1 to S phase transition. Cdc16 and Cdc27 are components of the APC (anaphase-promoting complex) which ubiquitinates cyclin B, resulting in cyclin B/Cdk complex degradation.

Inhibitor · Natural Compounds · Compound Libraries · Recombinant Proteins

This product is for Research Use Only · Not for Human or Veterinary or Therapeutic Use

Tel: 781-999-4286 E_mail: info@targetmol.com Address: 34 Washington Street, Wellesley Hills, MA 02481