

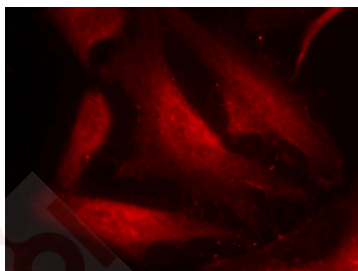
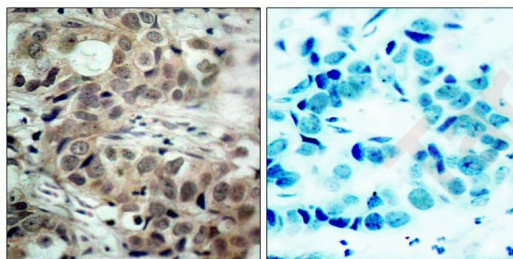
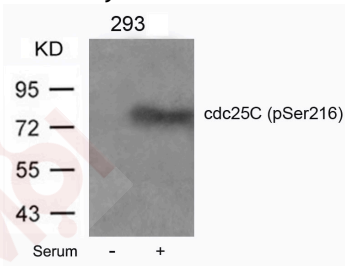
## Anti-Phospho-CDC25C (Ser216) Polyclonal Antibody

### Product Details

Ig Type:	IgG
Reactivity:	Human
Conjugation:	Unconjugated
Purification:	Antibodies were produced by immunizing rabbits with synthetic phosphopeptide and KLH conjugates. Antibodies were purified by affinity-chromatography using epitope-specific phosphopeptide. Non-phospho specific antibodies were removed by chromatography using non-phosphopeptide.

### Applications

- Verified Activity:
1. Western blot analysis of extracts from 293 cells untreated or treated with serum using cdc25C (Phospho-Ser216) Antibody TMAC-00765.
  2. Immunohistochemical analysis of paraffin-embedded human breast carcinoma tissue using cdc25C (Phospho-Ser216) Antibody TMAC-00765 (left) or the same antibody preincubated with blocking peptide (right).
  3. Immunofluorescence staining of methanol-fixed Hela cells using cdc25C (Phospho-Ser216) Antibody TMAC-00765.



Application: IF,IHC,WB

## A DRUG SCREENING EXPERT

---

### Properties

Stability & Storage: Store at 2°C-8°C for 1 month. Store at -20°C or -80°C for 12 months. Avoid repeated freeze-thaw cycles.

Shipping: Shipping with blue ice.

---

### Antigen Details

Immunogen: Peptide sequence around phosphorylation site of serine 216 (S-P-S(p)-M-P) derived from Human cdc25C

Antigen Species: human

Uniprot ID: P30307

Synonyms: p-CDC25C (S216);p-CDC25C (Ser216);CDC25C (p-Ser216);CDC25C (p-S216)

---

### Research Background

cdc25C is highly conserved during evolution and it plays a key role in the regulation of cell division. The encoded protein is a tyrosine phosphatase and belongs to the Cdc25 phosphatase family. It directs dephosphorylation of cyclin B-bound CDC2 and triggers entry into mitosis. It is also thought to suppress p53-induced growth arrest. Multiple alternatively spliced transcript variants of this gene have been described, however, the full-length nature of many of them is not known.

**Inhibitor · Natural Compounds · Compound Libraries · Recombinant Proteins**

This product is for Research Use Only · Not for Human or Veterinary or Therapeutic Use

Tel:781-999-4286 E\_mail:info@targetmol.com Address:34 Washington Street,Wellesley Hills,MA 02481