

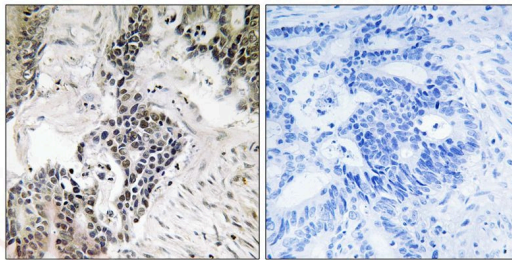
Anti-Phospho-CDC25C (Ser198) Polyclonal Antibody

Product Details

Ig Type:	IgG
Reactivity:	Human
Conjugation:	Unconjugated
Molecular Weight:	Actual: 53 kDa.
Purification:	Antibodies were produced by immunizing rabbits with synthetic phosphopeptide and KLH conjugates. Antibodies were purified by affinity-chromatography using epitope-specific phosphopeptide. Non-phospho specific antibodies were removed by chromatography using non-phosphopeptide.

Applications

Verified Activity: 1. Immunohistochemical analysis of paraffin-embedded human colon carcinoma tissue using CDC25C (Phospho-Ser198) antibody TMAC-00764 (left) or the same antibody preincubated with blocking peptide (right).



Application:	IHC
Recommended	IHC: 1:50-100

Properties

Stability & Storage:	Store at -20°C or -80°C for 12 months. Avoid repeated freeze-thaw cycles.
Shipping:	Shipping with blue ice.

Antigen Details

Immunogen:	Peptide sequence around phosphorylation site of Serine 198(E-F-S(p)-L-K) derived from Human CDC25C
Antigen Species:	human
Uniprot ID:	P30307
Synonyms:	p-CDC25C (Ser198);p-CDC25C (S198);CDC25C (p-S198);CDC25C (p-Ser198)

Research Background

cdc25C is highly conserved during evolution and it plays a key role in the regulation of cell division. The encoded protein is a tyrosine phosphatase and belongs to the Cdc25 phosphatase family. It directs dephosphorylation of cyclin B-bound CDC2 and triggers entry into mitosis. It is also thought to suppress p53-induced growth arrest. Multiple alternatively spliced transcript variants of this gene have been described, however, the full-length nature of

many of them is not known.

Inhibitor · Natural Compounds · Compound Libraries · Recombinant Proteins

This product is for Research Use Only · Not for Human or Veterinary or Therapeutic Use

Tel:781-999-4286 E_mail:info@targetmol.com Address:34 Washington Street,Wellesley Hills,MA 02481