

Anti-Phospho-CDC25B (Ser149) Polyclonal Antibody

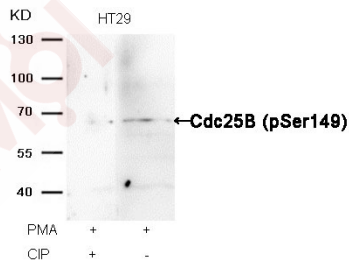
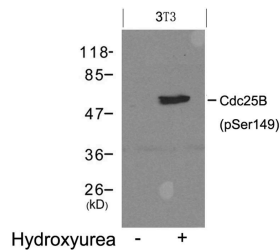
Product Details

Ig Type:	IgG
Reactivity:	Mouse
Conjugation:	Unconjugated
Purification:	Antibodies were produced by immunizing rabbits with synthetic peptide and KLH conjugates. Antibodies were purified by affinity-chromatography using epitope-specific peptide.

Applications

Verified Activity:

- Western blot analysis of extracts from 3T3 cells untreated (lane 1) or treated with Hydroxyurea (lane 2) using Cdc25B (Phospho-Ser149) Antibody TMAC-00763.
- Western blot analysis of extracts from HT29 cells, treated with PMA or calf intestinal phosphatase (CIP), using Cdc25B (Phospho-Ser149) Antibody TMAC-00763.



Application: WB

Properties

Stability & Storage:	Store at 2°C-8°C for 1 month. Store at -20°C or -80°C for 12 months. Avoid repeated freeze-thaw cycles.
Shipping:	Shipping with blue ice.

Antigen Details

Immunogen:	Peptide sequence around phosphorylation site of Serine 149 (F-R-S(p)-L-P) derived from Mouse Cdc25B
Antigen Species:	mouse
Uniprot ID:	Q9DBN8
Synonyms:	CDC25B (p-S149);p-CDC25B (Ser149);CDC25B (p-Ser149);p-CDC25B (S149)

Research Background

Cdc25B is a member of the CDC25 family of phosphatases. CDC25B activates the cyclin dependent kinase CDC2 by removing two phosphate groups and it is required for entry into mitosis. CDC25B shuttles between the nucleus and the cytoplasm due to nuclear localization and nuclear export signals. The protein is nuclear in the M and G1 phases of the cell cycle and moves to the cytoplasm during S and G2. CDC25B has oncogenic properties, although its role in tumor formation has not been determined. Multiple transcript variants for this gene exist.

Inhibitor · Natural Compounds · Compound Libraries · Recombinant Proteins

This product is for Research Use Only · Not for Human or Veterinary or Therapeutic Use

Tel:781-999-4286 E_mail:info@targetmol.com Address:34 Washington Street,Wellesley Hills,MA 02481