

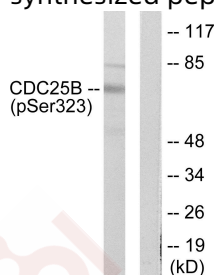
Anti-Phospho-CDC25B (Ser323) Polyclonal Antibody

Product Details

| | |
|-------------------|--|
| Ig Type: | IgG |
| Reactivity: | Human,Mouse,Rat |
| Conjugation: | Unconjugated |
| Molecular Weight: | Actual: 62 kDa. |
| Purification: | Antibodies were produced by immunizing rabbits with synthetic phosphopeptide and KLH conjugates. Antibodies were purified by affinity-chromatography using epitope-specific phosphopeptide. Non-phospho specific antibodies were removed by chromatography using non-phosphopeptide. |

Applications

Verified Activity: 1. Western blot analysis of extracts from NIH/3T3 cells treated with PMA (125ng/ml, 30mins), using CDC25B (Phospho-Ser323) antibody TMAC-00760. The lane on the right is treated with the synthesized peptide.



| | |
|--------------|----------------|
| Application: | WB |
| Recommended | WB: 1:500-3000 |

Properties

| | |
|----------------------|---|
| Stability & Storage: | Store at -20°C or -80°C for 12 months. Avoid repeated freeze-thaw cycles. |
| Shipping: | Shipping with blue ice. |

Antigen Details

| | |
|------------------|---|
| Immunogen: | Peptide sequence around phosphorylation site of serine 323 (S-P-S(p)-M-P) derived from Human CDC25B |
| Antigen Species: | Human |
| Uniprot ID: | P30305 |
| Synonyms: | CDC25B (p-Ser323);p-CDC25B (Ser323);CDC25B (p-S323);p-CDC25B (S323) |

Research Background

Tyrosine protein phosphatase which functions as a dosage-dependent inducer of mitotic progression. Required for G2/M phases of the cell cycle progression and abscission during cytokinesis in a ECT2-dependent manner. Directly dephosphorylates CDK1 and stimulates its kinase activity. The three isoforms seem to have a different level of activity.

Inhibitor · Natural Compounds · Compound Libraries · Recombinant Proteins

This product is for Research Use Only · Not for Human or Veterinary or Therapeutic Use

Tel:781-999-4286 E_mail:info@targetmol.com Address:34 Washington Street,Wellesley Hills,MA 02481