

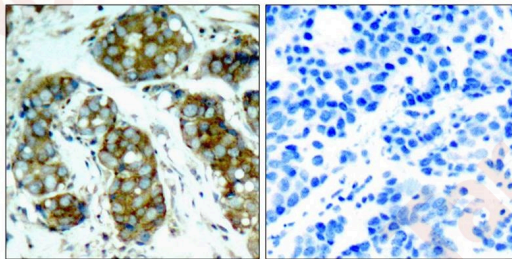
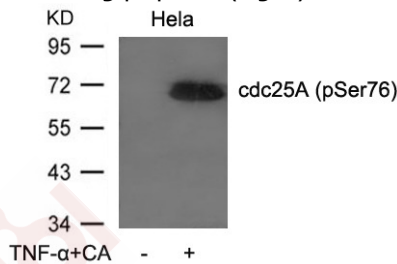
## Anti-Phospho-CDC25A (Ser76) Polyclonal Antibody

### Product Details

Ig Type:	IgG
Reactivity:	Human,Mouse,Rat
Conjugation:	Unconjugated
Purification:	Antibodies were produced by immunizing rabbits with synthetic phosphopeptide and KLH conjugates. Antibodies were purified by affinity-chromatography using epitope-specific phosphopeptide. Non-phospho specific antibodies were removed by chromatography using non-phosphopeptide.

### Applications

- Verified Activity:
- Western blot analysis of extracts from HeLa cells untreated or treated with TNF- $\alpha$  and CA using cdc25A (Phospho-Ser76) Antibody TMAC-00759.
  - Immunohistochemical analysis of paraffin-embedded human breast carcinoma tissue using cdc25A (Phospho-Ser76) Antibody TMAC-00759 (left) or the same antibody preincubated with blocking peptide (right).



Application: IHC,WB

### Properties

Stability & Storage:	Store at 2°C-8°C for 1 month. Store at -20°C or -80°C for 12 months. Avoid repeated freeze-thaw cycles.
Shipping:	Shipping with blue ice.

### Antigen Details

Immunogen: Peptide sequence around phosphorylation site of serine 76 (M-G-S(p)-S-E) derived from Human cdc25A

Antigen Species: Human

Uniprot ID: P30304

Synonyms: p-CDC25A (Ser76);CDC25A (p-S76);p-CDC25A (S76);CDC25A (p-Ser76)

---

### Research Background

Tyrosine protein phosphatase which functions as a dosage-dependent inducer of mitotic progression. Directly dephosphorylates CDC2 and stimulates its kinase activity. Also dephosphorylates CDK2 in complex with cyclin E, in vitro.

**Inhibitor · Natural Compounds · Compound Libraries · Recombinant Proteins**

This product is for Research Use Only · Not for Human or Veterinary or Therapeutic Use

Tel:781-999-4286 E\_mail:info@targetmol.com Address:34 Washington Street,Wellesley Hills,MA 02481