

## Anti-Phospho-CDC25A (Tyr59) Polyclonal Antibody

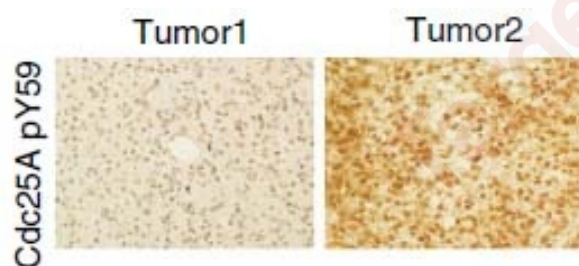
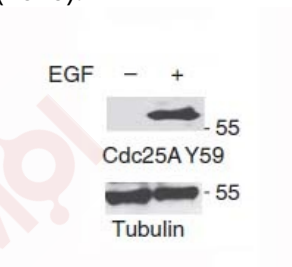
### Product Details

Ig Type:	IgG
Reactivity:	Human
Conjugation:	Unconjugated
Molecular Weight:	Theoretical: 70 kDa.
Purification:	Antibodies were produced by immunizing rabbits with synthetic phosphopeptide and KLH conjugates. Antibodies were purified by affinity-chromatography using epitope-specific phosphopeptide. Non-phospho specific antibodies were removed by chromatography using non-phosphopeptide.

### Applications

#### Verified Activity:

1. Western blot analysis of extracts from U87 cells, treated with EGF using CDC25A (Phospho-Tyr59) Antibody TMAC-00758. Reference: Nat. Commun. 7:12431 doi: 10.1038/ncomms12431 (2016).
2. Immunohistochemical analysis of a variety of human tumor tissue using CDC25A(Phospho-Tyr59) Antibody TMAC-00758. Reference: Nat. Commun. 7:12431 doi: 10.1038/ncomms12431 (2016).



Application:	IHC,WB
Recommended	WB: 1:500-1000

### Properties

Stability & Storage:	Store at -20°C or -80°C for 12 months. Avoid repeated freeze-thaw cycles.
Shipping:	Shipping with blue ice.

### Antigen Details

Immunogen: Peptide sequence around phosphorylation site of tyrosine 59 (S-D-Y(p)-E-Q) derived from Human CDC25A

Antigen Species: human

Uniprot ID: P30304

Synonyms: p-CDC25A (Y59);CDC25A (p-Y59);CDC25A (p-Tyr59);p-CDC25A (Tyr59)

---

### Research Background

Tyrosine protein phosphatase which functions as a dosage-dependent inducer of mitotic progression. Directly dephosphorylates CDC2 and stimulates its kinase activity. Also dephosphorylates CDK2 in complex with cyclin E, in vitro.

**Inhibitor · Natural Compounds · Compound Libraries · Recombinant Proteins**

This product is for Research Use Only · Not for Human or Veterinary or Therapeutic Use

Tel:781-999-4286 E\_mail:info@targetmol.com Address:34 Washington Street,Wellesley Hills,MA 02481