

## Anti-Phospho-CDC25A (Ser75) Polyclonal Antibody

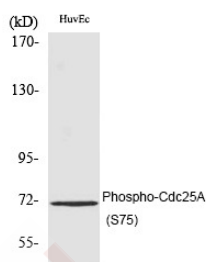
### Product Details

Ig Type:	IgG
Reactivity:	Human,Mouse,Rat
Conjugation:	Unconjugated
Molecular Weight:	Actual: 59 kDa.
Purification:	The antibody was affinity-purified from rabbit antiserum by affinity-chromatography using epitope-specific immunogen.

### Applications

#### Verified Activity:

1. Western blot analysis on mouse heart lysates using anti-Alpha-cardiac actin Mouse mAb.
2. Immunohistochemical analysis of paraffin- embedded mouse heart tissue using anti-Alpha - cardiac actin Mouse mAb.
3. Immunofluorescent staining of Hela cells using anti-Alpha-cardiac actin Mouse mAb.



Application:	ELISA,IHC,WB
Recommended	WB: 1:500-2000; IHC: 1:100-300; ELISA: 1:5000

### Properties

Stability & Storage:	Store at -20°C or -80°C for 12 months. Avoid repeated freeze-thaw cycles.
Shipping:	Shipping with blue ice.

### Antigen Details

Immunogen:	A synthesized phosphopeptide: human Cdc25A around the phosphorylation site of S75
Antigen Species:	Human
Uniprot ID:	P30304
Synonyms:	CDC25A (p-Ser75);CDC25A (p-S75);p-CDC25A (Ser75);p-CDC25A (S75)

**Inhibitor · Natural Compounds · Compound Libraries · Recombinant Proteins**

This product is for Research Use Only· Not for Human or Veterinary or Therapeutic Use

Tel:781-999-4286 E\_mail:info@targetmol.com Address:34 Washington Street,Wellesley Hills,MA 02481