

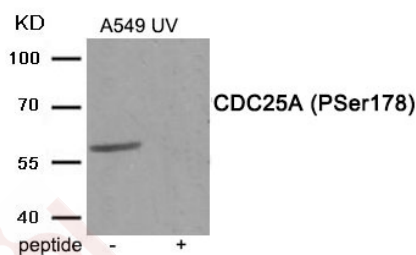
## Anti-Phospho-CDC25A (Ser178) Polyclonal Antibody

### Product Details

Ig Type:	IgG
Reactivity:	Human
Conjugation:	Unconjugated
Molecular Weight:	Actual: 59 kDa.
Purification:	Antibodies were produced by immunizing rabbits with synthetic phosphopeptide and KLH conjugates. Antibodies were purified by affinity-chromatography using epitope-specific phosphopeptide. Non-phospho specific antibodies were removed by chromatography using non-phosphopeptide.

### Applications

**Verified Activity:** 1. Western blot analysis of extracts from A549 cells treated with UV using Phospho-CDC25A (Ser178) antibody TMAC-00754. The lane on the right is treated with the antigen-specific peptide.



Application:	WB
Recommended	WB: 1:500-1000

### Properties

Stability & Storage:	Store at -20°C or -80°C for 12 months. Avoid repeated freeze-thaw cycles.
Shipping:	Shipping with blue ice.

### Antigen Details

Immunogen:	Peptide sequence around phosphorylation site of serine 178(Q-N-S(p)-A-P) derived from Human CDC25A
Antigen Species:	human
Uniprot ID:	P30304
Synonyms:	CDC25A (p-S178);p-CDC25A (S178);p-CDC25A (Ser178);CDC25A (p-Ser178)

### Research Background

Tyrosine protein phosphatase which functions as a dosage-dependent inducer of mitotic progression. Directly dephosphorylates CDC2 and stimulates its kinase activity. Also dephosphorylates CDK2 in complex with cyclin E, in vitro.

**Inhibitor · Natural Compounds · Compound Libraries · Recombinant Proteins**

This product is for Research Use Only · Not for Human or Veterinary or Therapeutic Use

Tel:781-999-4286    E\_mail:info@targetmol.com    Address:34 Washington Street,Wellesley Hills,MA 02481