

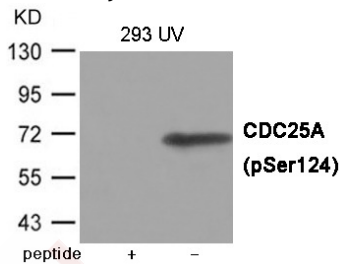
## Anti-Phospho-CDC25A (Ser124) Polyclonal Antibody

### Product Details

|                   |  |
|-------------------|--|
| Ig Type:          | IgG  |
| Reactivity:       | Human,Mouse,Rat  |
| Conjugation:      | Unconjugated   |
| Molecular Weight: | Actual: 70 kDa.  |
| Purification:     | Antibodies were produced by immunizing rabbits with synthetic phosphopeptide and KLH conjugates. Antibodies were purified by affinity-chromatography using epitope-specific phosphopeptide. Non-phospho specific antibodies were removed by chromatography using non-phosphopeptide. |

### Applications

Verified Activity: 1. Western blot analysis of extracts from 293 cells with UV using CDC25A (Phospho-Ser124) Antibody TMAC-00753. The lane on the left is treated with the antigen-specific peptide.



Application: WB

### Properties

Stability & Storage: Store at -20°C or -80°C for 12 months. Avoid repeated freeze-thaw cycles.

Shipping: Shipping with blue ice.

### Antigen Details

|                  |   |
|------------------|---|
| Immunogen:       | Peptide sequence around phosphorylation site of Serine 124 (S-H-S(p)-D-S) derived from Human CDC25A |
| Antigen Species: | human   |
| Uniprot ID:      | P30304  |
| Synonyms:        | CDC25A (p-S124);CDC25A (p-Ser124);p-CDC25A (S124);p-CDC25A (Ser124)                                 |

### Research Background

Tyrosine protein phosphatase which functions as a dosage-dependent inducer of mitotic progression. Directly dephosphorylates CDK1 and stimulates its kinase activity. Also dephosphorylates CDK2 in complex with cyclin E, in vitro.

**Inhibitor · Natural Compounds · Compound Libraries · Recombinant Proteins**

This product is for Research Use Only · Not for Human or Veterinary or Therapeutic Use

Tel:781-999-4286 E\_mail:info@targetmol.com Address:34 Washington Street,Wellesley Hills,MA 02481