

Anti-CDC23 Antibody (8S190)

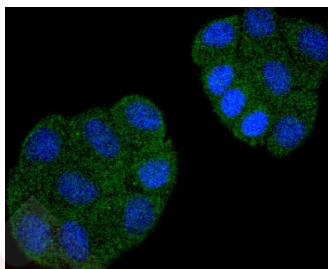
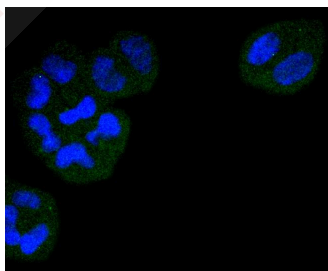
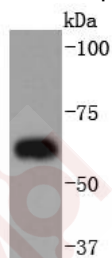
Product Details

Ig Type:	IgG
Reactivity:	Human,Mouse,Rat
Conjugation:	Unconjugated
Molecular Weight:	Theoretical: 69 kDa.
Clone:	8S190
Purification:	ProA affinity purified

Applications

Verified Activity:

1. Western blot analysis of Cdc23 on HeLa cells lysates using anti-Cdc23 antibody at 1/1,000 dilution.
2. ICC staining Cdc23 in HeLa cells (green). The nuclear counter stain is DAPI (blue). Cells were fixed in paraformaldehyde, permeabilised with 0.25% Triton X100/PBS.
3. ICC staining Cdc23 in HepG2 cells (green). The nuclear counter stain is DAPI (blue). Cells were fixed in paraformaldehyde, permeabilised with 0.25% Triton X100/PBS.



Application:	ICC/IF,WB
Recommended	WB: 1:1000-2000; ICC/IF: 1:50-200

Properties

Stability & Storage: Store at -20°C or -80°C for 12 months. Avoid repeated freeze-thaw cycles.

Shipping: Shipping with blue ice.

Antigen Details

Immunogen: Recombinant Protein

Uniprot ID: Q9UJX2

Synonyms: Cell division cycle 23 homolog; CDC23_HUMAN; ANAPC8; Apc 8; cell division cycle 23; Cut23; Cdc 23; Anaphase promoting complex subunit 8; Cell division cycle protein 23; Cyclosome subunit 8; Anaphase-promoting complex subunit 8; APC8; Cell division cycle protein 23 homolog

Research Background

Cell cycle progression is controlled at a point late in G1 designated Start. Passage through Start requires the activity of the cyclin-dependent protein kinase Cdc28. Transition from G1 to S phase requires the association of Cdc28 with members of the G1 cyclin family. Exit from mitosis and initiation of the next cell cycle requires a complex of proteins designated the anaphase-promoting complex (APC). This complex consists of two proteins, Cdc16 and Cdc27 (also referred to as Snb1), which are involved in limiting DNA replication to once per cell cycle. Cdc23, another component of the APC, is required for both entering and exiting anaphase, and is important for the proper separation of sister chromatids. The APC is thought to be stabilized by Cdc26 (also known as Scd26). In addition to these APC proteins, Cdc5 is also required for completion of mitosis. In contrast, Cdc20 acts as a DNA-damage induced checkpoint, preventing mitosis when DNA damage has occurred.

Inhibitor · Natural Compounds · Compound Libraries · Recombinant Proteins

This product is for Research Use Only · Not for Human or Veterinary or Therapeutic Use

Tel: 781-999-4286 E_mail: info@targetmol.com Address: 34 Washington Street, Wellesley Hills, MA 02481