

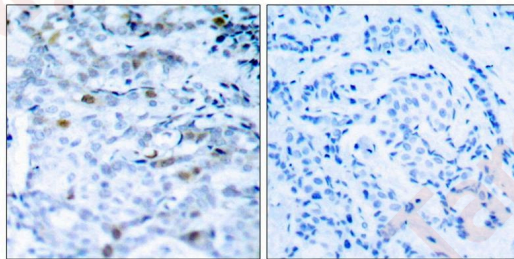
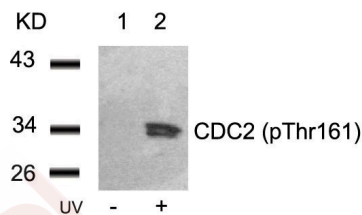
Anti-Phospho-CDK1 (Thr161) Polyclonal Antibody 2

Product Details

Ig Type:	IgG
Reactivity:	Human,Mouse,Rat
Conjugation:	Unconjugated
Purification:	Antibodies were produced by immunizing rabbits with synthetic phosphopeptide and KLH conjugates. Antibodies were purified by affinity-chromatography using epitope-specific phosphopeptide. Non-phospho specific antibodies were removed by chromatography using non-phosphopeptide.

Applications

- Verified Activity:
- Western blot analysis of extracts from Hela cells untreated (lane 1) or treated with UV (lane 2) using CDC2 (Phospho-Thr161) Antibody TMAC-00749.
 - Immunohistochemical analysis of paraffin-embedded human breast carcinoma tissue using CDC2 (Phospho-Thr161) Antibody TMAC-00749 (left) or the same antibody preincubated with blocking peptide (right).



Application: IHC,WB

Properties

- Stability & Storage: Store at 2°C-8°C for 1 month. Store at -20°C or -80°C for 12 months. Avoid repeated freeze-thaw cycles.
- Shipping: Shipping with blue ice.

Antigen Details

Immunogen: Peptide sequence around phosphorylation site of threonine161 (T-Y-T(p)-H-E) derived from Human CDC2

Antigen Species: human

Uniprot ID: P06493

Synonyms: p-CDK1 (Thr161);CDK1 (p-T161);CDK1 (p-Thr161);p-CDK1 (T161)

Research Background

Plays a key role in the control of the eukaryotic cell cycle. It is required in higher cells for entry into S-phase and mitosis. p34 is a component of the kinase complex that phosphorylates the repetitive C-terminus of RNA polymerase II.

Inhibitor · Natural Compounds · Compound Libraries · Recombinant Proteins

This product is for Research Use Only · Not for Human or Veterinary or Therapeutic Use

Tel:781-999-4286 E_mail:info@targetmol.com Address:34 Washington Street,Wellesley Hills,MA 02481