

## Anti-CD8 alpha Antibody (2N656)

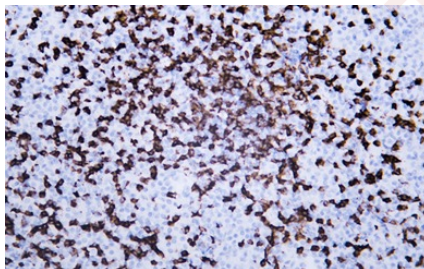
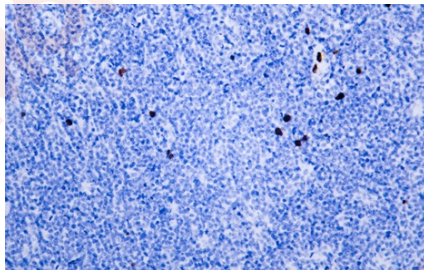
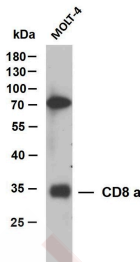
### Product Details

Ig Type:	IgG2a, Kappa
Reactivity:	Human
Conjugation:	Unconjugated
Clone:	2N656
Purification:	The antibody was affinity-purified from mouse ascites by affinity-chromatography using specific immunogen.

### Applications

#### Verified Activity:

1. Whole cell lysates were separated by 10% SDS-PAGE, and the membrane was blotted with anti-CD8 antibody.
2. Human burkitt lymphoma tissue was stained with Anti-CD8 Antibody.
3. Human lymphoma tissue was stained with Anti-CD8 Antibody.



Application:	IF,IHC,WB
Recommended	IHC: 1:100-500; WB: 1:200-1000; IF: 1:100-500

**Properties**

Stability & Storage: Store at -20°C or -80°C for 12 months. Avoid repeated freeze-thaw cycles.

Shipping: Shipping with blue ice.

---

**Antigen Details**

Immunogen: A synthesized peptide: human CD8 a

Antigen Species: human

Gene ID: 925

Uniprot ID: P01732

Synonyms: OKT8 T-cell antigen;Leu2;CD8  $\alpha$ /CD8A;MAL;Lyt-2;CD8;CD8a;p32;CD8a molecule

**Inhibitor · Natural Compounds · Compound Libraries · Recombinant Proteins**

This product is for Research Use Only · Not for Human or Veterinary or Therapeutic Use

Tel:781-999-4286 E\_mail:info@targetmol.com Address:34 Washington Street,Wellesley Hills,MA 02481