

Anti-P-Selectin Antibody (3L556)

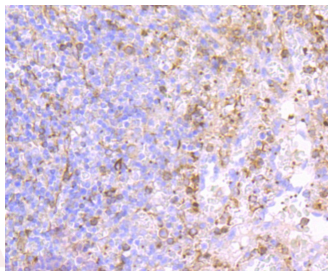
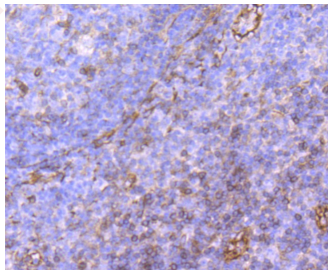
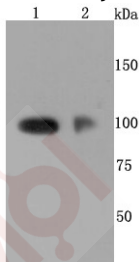
Product Details

Ig Type:	IgG
Reactivity:	Human
Conjugation:	Unconjugated
Molecular Weight:	Theoretical: 100 kDa.
Clone:	3L556
Purification:	ProA affinity purified

Applications

Verified Activity:

1. Western blot analysis of CD62P on different cells lysates using anti-CD62P antibody at 1/500 dilution. Positive control: Line1: HUVEC, Line2: Human placenta.
2. Immunohistochemical analysis of paraffin-embedded human tonsil tissue using anti-CD62P antibody. Counter stained with hematoxylin.
3. Immunohistochemical analysis of paraffin-embedded human spleen tissue using anti-CD62P antibody. Counter stained with hematoxylin.



Application:	IHC,WB
Recommended	WB: 1:1000-2000; IHC: 1:50-200

Properties

Stability & Storage: Store at -20°C or -80°C for 12 months. Avoid repeated freeze-thaw cycles.

Shipping: Shipping with blue ice.

Antigen Details

Immunogen: Recombinant Protein

Uniprot ID: P16109

Synonyms: CD62 antigen-like family member P;PADGEM;P-selectin;LECAM3;GMP-140;Leukocyte-endothelial cell adhesion molecule 3;Granule membrane protein 140

Research Background

Selectins, also designated CD62 antigens, comprise a family of carbohydrate-binding proteins involved in mediating cellular interactions with leukocytes. L-Selectin (also designated LECAM-1 or CD62L) is expressed on the majority of B and naive T cells and on most monocytes, neutrophils and eosinophils. L-Selectin interacts with specific carbohydrates expressed by activated endothelial cells. P-Selectin (also designated GMP-140 or CD62P), expressed on activated platelets and endothelial cells, and E-Selectin (also designated ELMA-1 or CD62E), expressed on endothelial cells, exhibit overlapping ligand specificities. Both recognize sialyl-Le (x) as a ligand and bind to specific carbohydrates on neutrophils and monocytes.

Inhibitor · Natural Compounds · Compound Libraries · Recombinant Proteins

This product is for Research Use Only · Not for Human or Veterinary or Therapeutic Use

Tel:781-999-4286 E_mail:info@targetmol.com Address:34 Washington Street,Wellesley Hills,MA 02481