

Anti-CD46 Antibody (3J800)

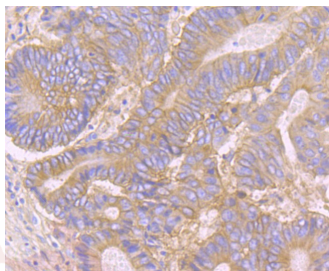
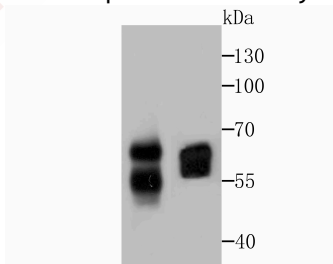
Product Details

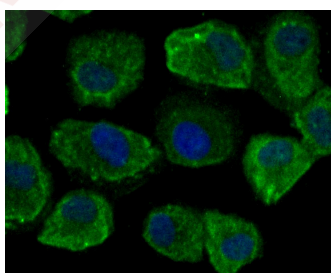
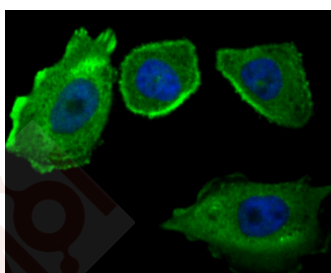
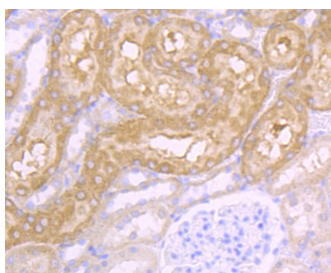
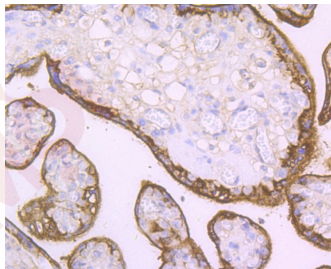
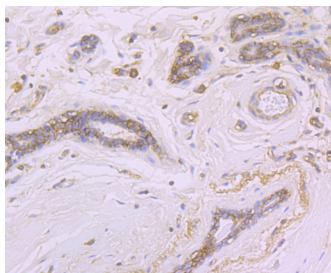
Ig Type:	IgG
Reactivity:	Human,Rat
Conjugation:	Unconjugated
Molecular Weight:	Theoretical: 55 kDa.
Clone:	3J800
Purification:	ProA affinity purified

Applications

Verified Activity:

1. Western blot analysis of CD46 on Siha and PC-3M cell lysates using anti-CD46 antibody at 1/1,000 dilution.
2. Immunohistochemical analysis of paraffin-embedded human colon cancer tissue using anti-CD46 antibody. Counter stained with hematoxylin.
3. Immunohistochemical analysis of paraffin-embedded human breast tissue using anti-CD46 antibody. Counter stained with hematoxylin.
4. Immunohistochemical analysis of paraffin-embedded human placenta tissue using anti-CD46 antibody. Counter stained with hematoxylin.
5. Immunohistochemical analysis of paraffin-embedded rat kidney tissue using anti-CD46 antibody. Counter stained with hematoxylin.
6. ICC staining CD46 in PC-3M cells (green). The nuclear counter stain is DAPI (blue). Cells were fixed in paraformaldehyde, permeabilised with 0.25% Triton X100/PBS.
7. ICC staining CD46 in HUVEC cells (green). The nuclear counter stain is DAPI (blue). Cells were fixed in paraformaldehyde, permeabilised with 0.25% Triton X100/PBS.





Application: ICC,IHC,WB

Recommended WB: 1:1000-5000; IHC: 1:50-200; ICC: 1:50-200

Properties

Stability & Storage: Store at -20°C or -80°C for 12 months. Avoid repeated freeze-thaw cycles.

Shipping: Shipping with blue ice.

Antigen Details

Immunogen: Recombinant Protein
Uniprot ID: P15529
Synonyms: TLX;Trophoblast leukocyte common antigen;Membrane cofactor protein

Research Background

CD46, also called membrane cofactor protein (MCP), is a transmembrane glycoprotein that exists as a non-disulfide-linked dimer. CD46 regulates the complement cascade by inhibiting C3b and C4b deposited on self tissue. CD46 is a cofactor that binds to C3b and C4b, allowing their degradation by a plasma serine protease called factor I. This function resides in the complement control protein repeats (CCPs), with CCP1-4 essential for regulation. CD46 is widely distributed on thymocytes, T cells, B cells, monocytes, granulocytes, NK cells, platelets, endothelial cells, epithelial cells, fibroblasts, placenta and sperm, but not on erythrocytes. It is the major high affinity receptor for measles virus and human herpes virus. Mouse cells ubiquitously express CRRY, which is a functional ortholog of human decay-accelerating factor (DAF; CD55) and membrane cofactor protein (MCP; CD46).

Inhibitor · Natural Compounds · Compound Libraries · Recombinant Proteins

This product is for Research Use Only· Not for Human or Veterinary or Therapeutic Use

Tel:781-999-4286 E_mail:info@targetmol.com Address:34 Washington Street,Wellesley Hills,MA 02481