

## Anti-CD40 Ligand Antibody (1A416)

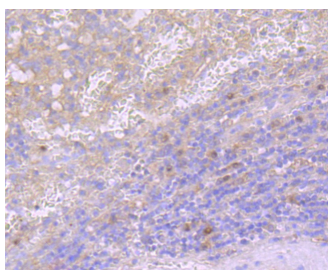
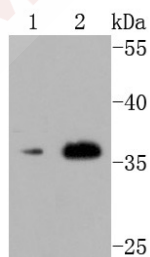
### Product Details

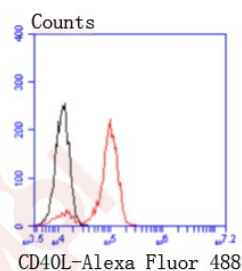
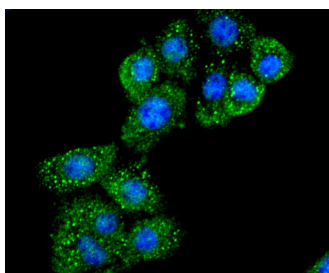
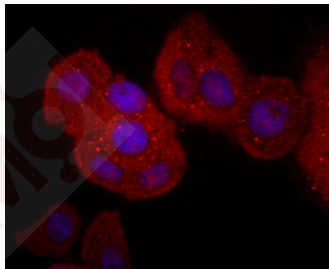
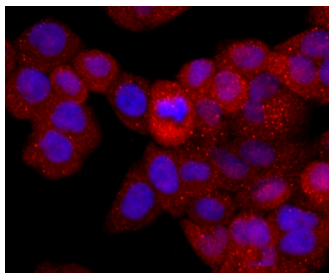
Ig Type:	IgG
Reactivity:	Human,Mouse,Rat
Conjugation:	Unconjugated
Molecular Weight:	Theoretical: 36 kDa.
Clone:	1A416
Purification:	ProA affinity purified

### Applications

#### Verified Activity:

1. Western blot analysis of CD40L on different cells lysates using anti-CD40L antibody at 1/500 dilution. Positive control: Lane 1: Hela, Lane 2: Mouse liver.
2. Immunohistochemical analysis of paraffin-embedded human spleen tissue using anti- CD40L antibody. Counter stained with hematoxylin.
3. ICC staining CD40L in Hela cells (red). The nuclear counter stain is DAPI (blue). Cells were fixed in paraformaldehyde, permeabilised with 0.25% Triton X100/PBS.
4. ICC staining CD40L in MCF-7 cells (red). The nuclear counter stain is DAPI (blue). Cells were fixed in paraformaldehyde, permeabilised with 0.25% Triton X100/PBS.
5. ICC staining CD40L in NIH-3T3 cells (green). The nuclear counter stain is DAPI (blue). Cells were fixed in paraformaldehyde, permeabilised with 0.25% Triton X100/PBS.
6. Flow cytometric analysis of THP-1 cells with CD40L antibody at 1/50 dilution (red) compared with an unlabelled control (cells without incubation with primary antibody; black). Alexa Fluor 488-conjugated goat anti rabbit IgG was used as the secondary antibody.





Application: FCM, ICC/IF, IHC, WB

Recommended WB: 1:500-1000; IHC: 1:50-200; ICC/IF: 1:50-200; FCM: 1:50-100

### Properties

Stability & Storage: Store at -20°C or -80°C for 12 months. Avoid repeated freeze-thaw cycles.

Shipping: Shipping with blue ice.

### Antigen Details

Immunogen: Recombinant Protein

Uniprot ID: P29965

Synonyms: TNFSF5; HIGM1; CD154; gp39; CD40L; CD40LG; CD40 Ligand; T-BAM; TNFSF5IMD3; IGM; IMD3; CD40LIGM; TRAP

### Research Background

Resting B cells can be activated and clonally expanded into antibody-producing cells in response to a combination of cell contact and soluble signals provided by primed helper T (Th) cells. While cytokines IL-4 and IL-13 alone are inadequate for B cell activation, contact with Th cells seems to be sufficient for delivery of proliferative signals. CD40 and CD154 (also designated CD40L or TRAP) comprise a receptor ligand pair central to the transmission of this

## A DRUG SCREENING EXPERT

---

signal. CD40 is expressed on the surface of B cells and CD154 is expressed on activated T cells. In the presence of such stimulus, IL-4 and IL-13 are capable of triggering immunoglobulin class switching and secretion of IgE. CD154 is a 261 amino acid protein that is expressed as a soluble cytokine as well as a homotrimeric type II transmembrane protein. Its expression is tightly regulated, and abnormal levels of CD154 are associated with the pathogenesis of atheromatous plaque destabilization and thrombotic events. Mutations in the gene encoding for CD154 are implicated in hyper-IgM immunodeficiency syndrome type 1.

**Inhibitor · Natural Compounds · Compound Libraries · Recombinant Proteins**

This product is for Research Use Only · Not for Human or Veterinary or Therapeutic Use

Tel:781-999-4286 E\_mail:info@targetmol.com Address:34 Washington Street,Wellesley Hills,MA 02481