

Anti-CD3D Antibody (1W363)

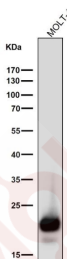
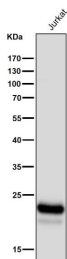
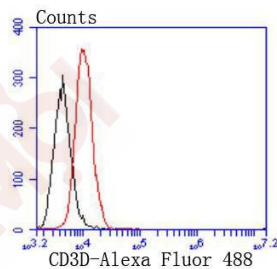
Product Details

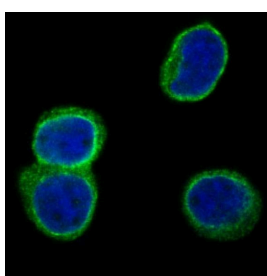
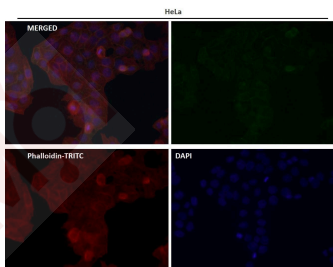
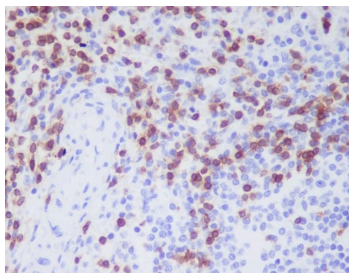
Ig Type:	IgG
Reactivity:	Human
Conjugation:	Unconjugated
Molecular Weight:	Theoretical: 19 kDa.
Clone:	1W363
Purification:	Affinity-chromatography

Applications

Verified Activity:

1. Flow cytometric analysis of Raji cells with CD3D antibody at 1/50 dilution (red) compared with an unlabelled control (cells without incubation with primary antibody; black). Alexa Fluor 488-conjugated goat anti rabbit IgG was used as the secondary antibody.
2. All lanes use the Antibody at 1:2K dilution for 1 hour at room temperature.
3. All lanes use the Antibody at 1:2K dilution for 1 hour at room temperature.
4. Immunohistochemical analysis of paraffin-embedded human spleen, using CD3D Antibody.
5. Immunofluorescent analysis using the Antibody at 1:50 dilution.
6. Immunofluorescent analysis of Jurkat cells, using CD3D Antibody.





Application: FCM, ICC/IF, IHC, IP, WB

Recommended WB: 1:1000-2000; IHC: 1:100-200; ICC/IF: 1:50-200; IP: 1:20-50; FCM: 1:20-100

Properties

Stability & Storage: Store at 2°C-8°C for 1 month. Store at -20°C or -80°C for 12 months. Avoid repeated freeze-thaw cycles.

Shipping: Shipping with blue ice.

Antigen Details

Immunogen: A synthesized peptide: human CD3 delta

Antigen Species: human

Uniprot ID: P04234

Research Background

Part of the TCR-CD3 complex present on T-lymphocyte cell surface that plays an essential role in adaptive immune response.

Inhibitor · Natural Compounds · Compound Libraries · Recombinant Proteins

This product is for Research Use Only · Not for Human or Veterinary or Therapeutic Use

Tel: 781-999-4286 E_mail: info@targetmol.com Address: 34 Washington Street, Wellesley Hills, MA 02481